

DX272

Description

The E/One model DX explosionproof grinder pump is engineered to meet the stringent Factory Mutual™ explosionproof equipment standards for use in locations classified as Class I, Division 1, Group D (approval standards 3600, 3610, and 3615). The DX272 is a 275-gallon capacity grinder pump station that contains two explosionproof grinder pumps. Note: Only the pumps are listed by FM for explosionproof equipment.

General Features

The DX272 comes complete with a self-contained level control system, eliminating troublesome float switches. The pump uses radio frequency identification (RFID) technology to communicate between the level controls and the motor controls. The grinder pumps are automatically activated and run infrequently for very short periods.

The internal check valve assemblies, located in the grinder pumps, are custom-designed for non-clog, trouble-free operation.

- 275 gallons (1041 liters) of capacity; HDPE tank and lid
- Rated for flows of 5000 gpd (18,927 lpd)
- Available in heights of 129 inches and 160 inches; height adjustment can be performed in the field.

E/One requires that the Uni-Lateral, E/One's own stainless steel check valve, be installed between the grinder pump station and the street main for added protection against backflow.

Operational Information

Motors

1 hp, 1,725 rpm, high torque, capacitor start, thermally protected, 240V, 60 Hz, 1 phase

Inlet Connections

4-inch inlet grommet standard for DWV pipe. Other inlet configurations available from the factory.

Discharge Connections

Pump discharge terminates in 1.25-inch NPT female thread. Can easily be adapted to 1.25-inch PVC pipe or any other material required by local codes.

Discharge (per pump)

15 gpm at 0 psig (0.95 lps at 0 m)

11 gpm at 40 psig (0.69 lps at 28 m)

7.8 gpm at 80 psig (0.49 lps at 56 m)

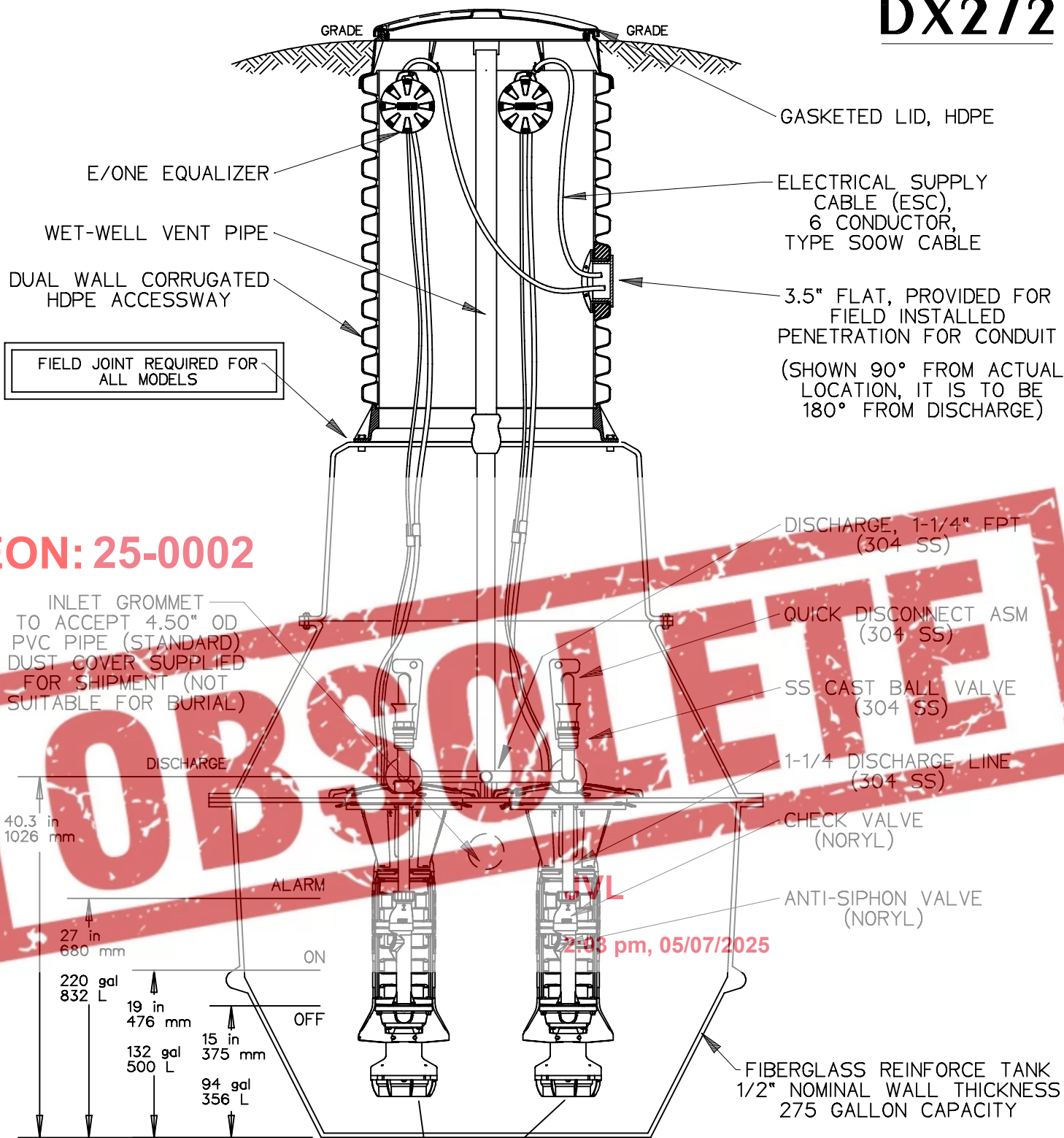
EON: 25-0002



JVL

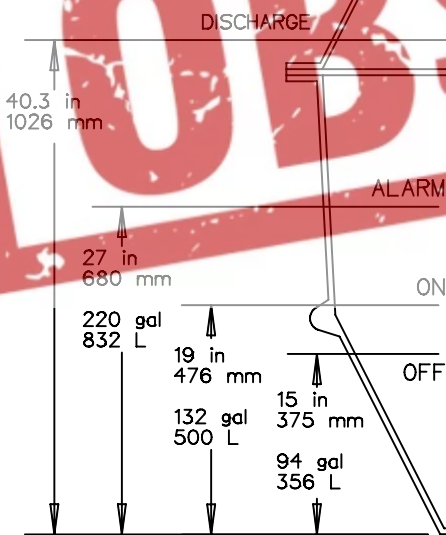
2:03 pm, 05/07/2025

DX272



EON: 25-0002

INLET GROMMET TO ACCEPT 4.50" OD PVC PIPE (STANDARD) DUST COVER SUPPLIED FOR SHIPMENT (NOT SUITABLE FOR BURIAL)



SEMI-POSITIVE DISPLACEMENT TYPE PUMP EACH DIRECTLY DRIVEN BY 1 HP MOTOR CLASS I, DIV 1, GROUP D

NOTE:

THE PUMP ASSEMBLIES ARE LISTED BY ETL TO FACTORY MUTUAL (FM) STANDARDS FOR CLASS I, DIVISION 1, GROUP D, THE LEVEL CONTROL SYSTEM, INTEGRAL TO THE PUMP, IS INTRINSICALLY SAFE (THE STATION IS NOT PART OF THE LISTING)
-ALSO AVAILABLE APPROVED BY CSA FOR CLASS 1, DIVISION 1, GROUP D

SGS	CH	12/3/10	A	
DR BY	CHK'D	DATE	ISSUE	SCALE

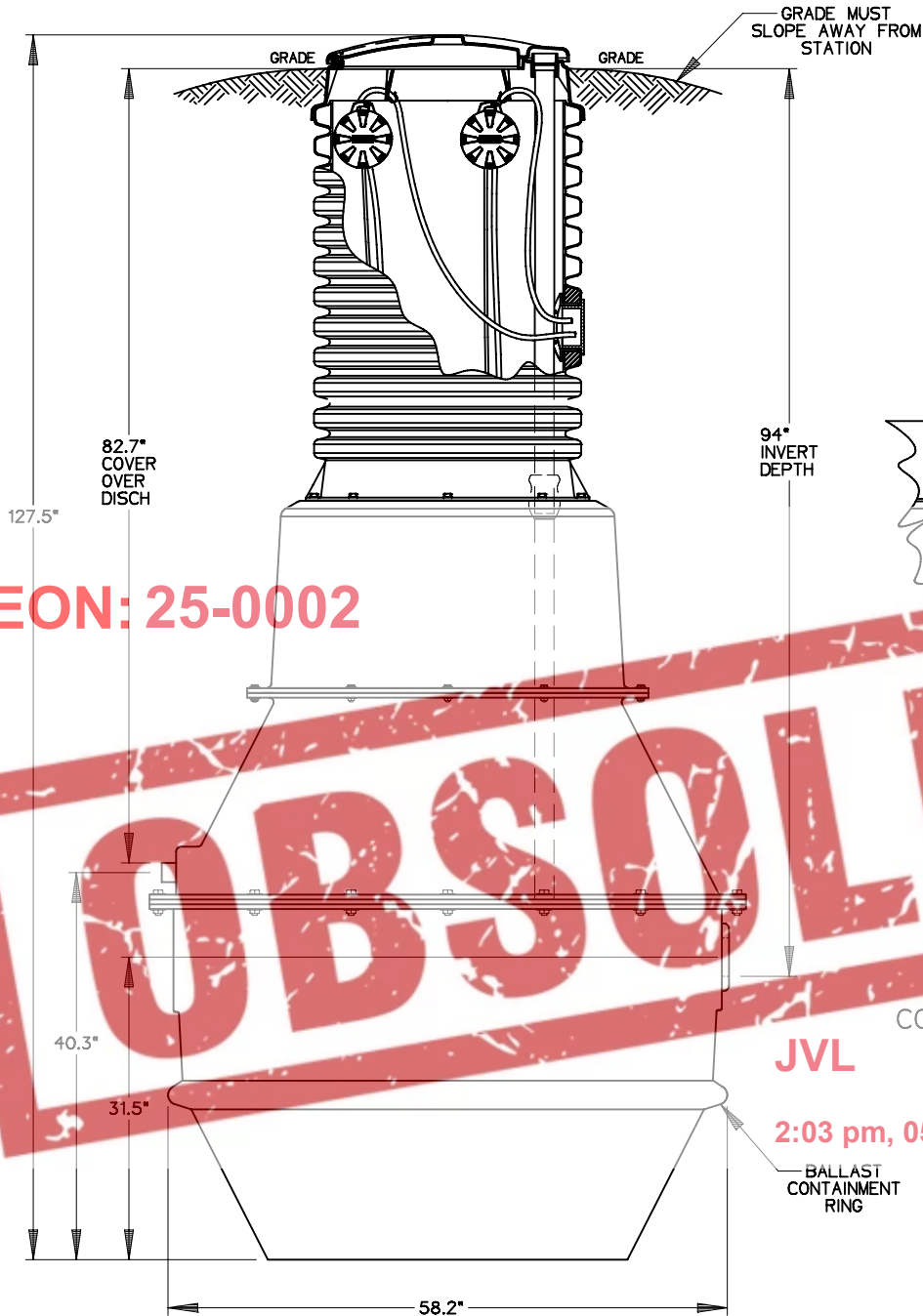


MODEL DX272, EXPLOSION PROOF PUMP
DETAIL SHEET

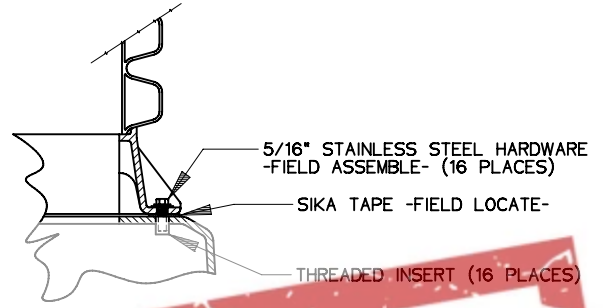
NA0203P02

2:03 pm, 05/07/2025

DX272-129



EON: 25-0002



DETAIL, FIELD JOINT

SEE INSTALLATION INSTRUCTIONS FOR FURTHER DETAILS

OBSCOLETE

CONCRETE BALLAST MAY BE REQUIRED SEE INSTALLATION INSTRUCTIONS FOR DETAILS

JVL

2:03 pm, 05/07/2025

BALLAST CONTAINMENT RING

DISCHARGE: 1-1/4 FEMALE PIPE THREAD

INLET: EPDM GROMMET FOR 4" DWV PIPE (STANDARD)

SGS	CAH	12/3/10	B	1/20
DR BY	CHK'D	DATE	ISSUE	SCALE



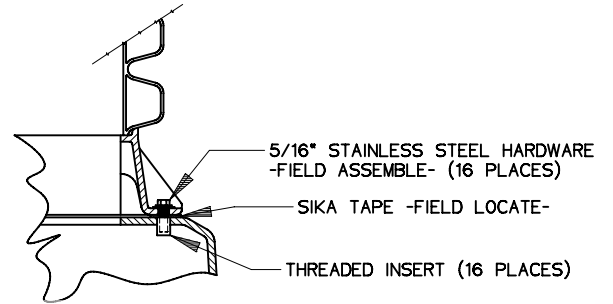
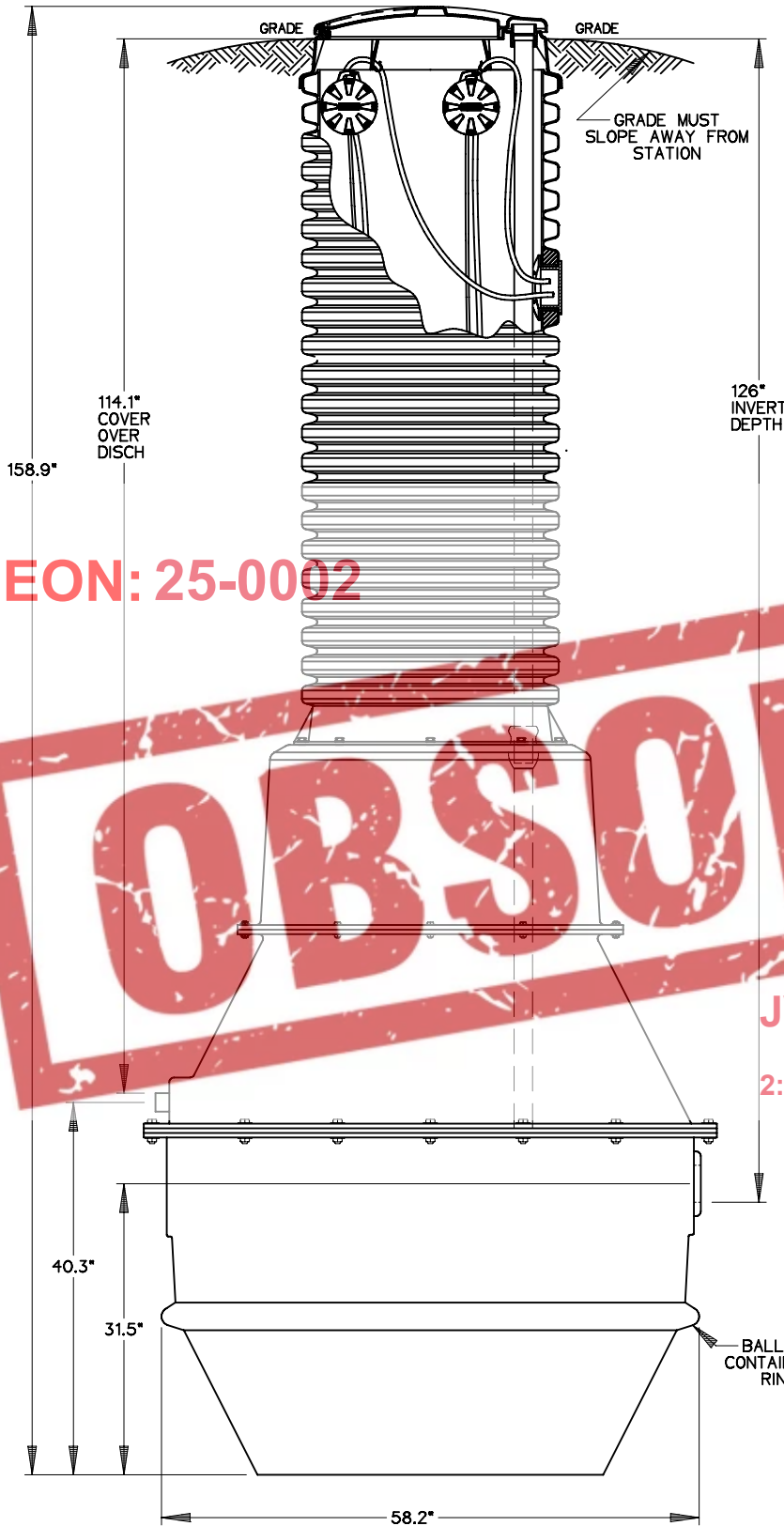
MODEL DX272-129
EXPLOSIONPROOF PUMP

NA0203P03

NOTE:

THE PUMP ASSEMBLIES ARE LISTED BY ETL TO FACTORY MUTUAL (FM) STANDARDS FOR CLASS I, DIVISION I, GROUP D, THE LEVEL CONTROL SYSTEM, INTEGRAL TO THE PUMP, IS INTRINSICALLY SAFE (THE STATION IS NOT PART OF THE LISTING)
-ALSO AVAILABLE APPROVED BY CSA FOR CLASS 1, DIVISION 1, GROUP D

DX272-160



DETAIL, FIELD JOINT

SEE INSTALLATION INSTRUCTIONS FOR FURTHER DETAILS

EON: 25-0002

OBSSOLETE

JVL

CONCRETE BALLAST MAY BE REQUIRED
SEE INSTALLATION INSTRUCTIONS FOR DETAILS
2:03 pm, 05/07/2025

DISCHARGE: 1-1/4 FEMALE PIPE THREAD
INLET: EPDM GROMMET FOR 4\"/>

NOTE:

THE PUMP ASSEMBLIES ARE LISTED BY ETL TO FACTORY MUTUAL (FM) STANDARDS FOR CLASS I, DIVISION I, GROUP D. THE LEVEL CONTROL SYSTEM, INTEGRAL TO THE PUMP, IS INTRINSICALLY SAFE (THE STATION IS NOT PART OF THE LISTING)
-ALSO AVAILABLE APPROVED BY CSA FOR CLASS 1, DIVISION 1, GROUP D

SGS	CAH	12/3/10	A	1/16
DR BY	CHK'D	DATE	ISSUE	SCALE



MODEL DX272-160
EXPLOSIONPROOF PUMP

NA0203P04