

DH272

General Features

The model DH272 grinder pump station is a complete unit that includes: two grinder pumps, check valve, FRP (fiberglass reinforced polyester) tank, controls, and alarm panel. A single DH272 is ideal for up to six, average single-family homes and can also be used for up to 20 average single-family homes where codes allow and with consent of the factory.

- Rated for flows of 5000 gpd (18,927 lpd)
- 275 gallons (1041 liters) of capacity
- For outdoor installation
- Standard outdoor heights range from 97 inches to 160 inches

The DH272 has a cable that connects the motor controls to the level controls through watertight penetrations.

Operational Information

Motor

1 hp, 1,725 rpm, high torque, capacitor start, thermally protected, 120/240V, 60 Hz, 1 phase

Inlet Connections

4-inch inlet grommet standard for DWV pipe. Other inlet configurations available from the factory.

Discharge Connections

Pump discharge terminates in 1.25-inch NPT female thread. Can easily be adapted to 1.25-inch PVC pipe or any other material required by local codes.

Discharge

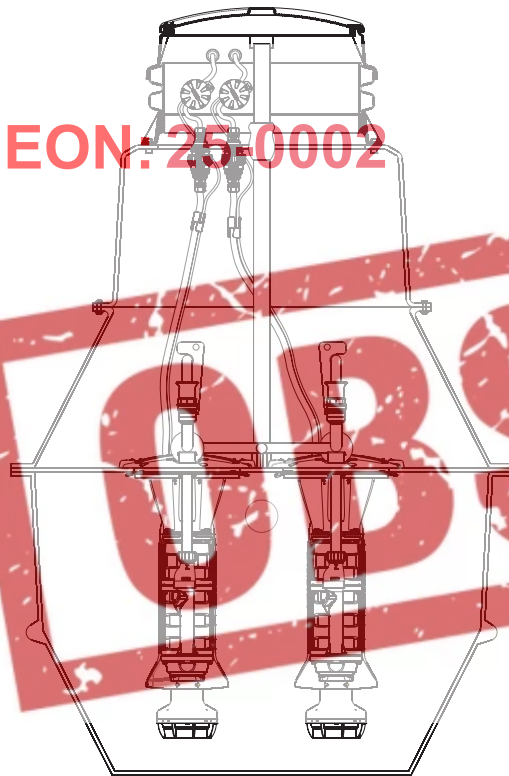
15 gpm at 0 psig (0.95 lps at 0 m)
11 gpm at 40 psig (0.69 lps at 28 m)
7.8 gpm at 80 psig (0.49 lps at 56 m)

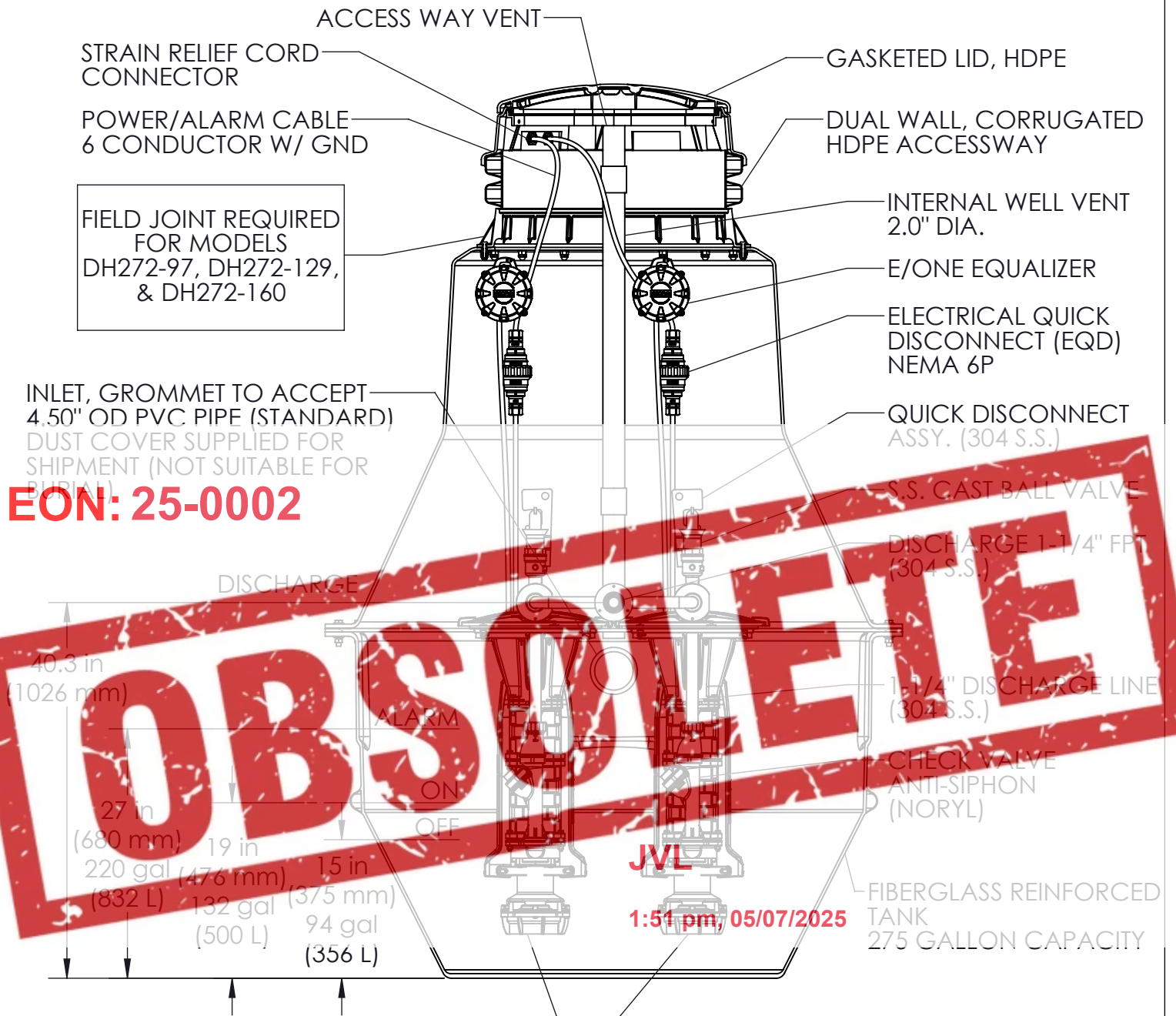
Accessories

E/One requires that the Uni-Lateral, E/One's own stainless steel check valve, be installed between the grinder pump station and the street main for added protection against backflow.

Alarm panels are available with a variety of options, from basic monitoring to advanced notice of service requirements.

The Remote Sentry is ideal for installations where the alarm panel may be hidden from view.





FIELD JOINT REQUIRED FOR MODELS DH272-97, DH272-129, & DH272-160

INLET, GROMMET TO ACCEPT 4.50" OD PVC PIPE (STANDARD) DUST COVER SUPPLIED FOR SHIPMENT (NOT SUITABLE FOR BURIAL)

EON: 25-0002

OBSOLETE

JVL
1:51 pm, 05/07/2025

SEMI-POSITIVE DISPLACEMENT TYPE PUMP EACH DIRECTLY DRIVEN BY A 1 HP MOTOR

CONCRETE BALLAST MAY BE REQUIRED SEE INSTALLATION INSTRUCTIONS FOR DETAILS

NOTE: DIMENSIONS ARE FOR REFERENCE ONLY

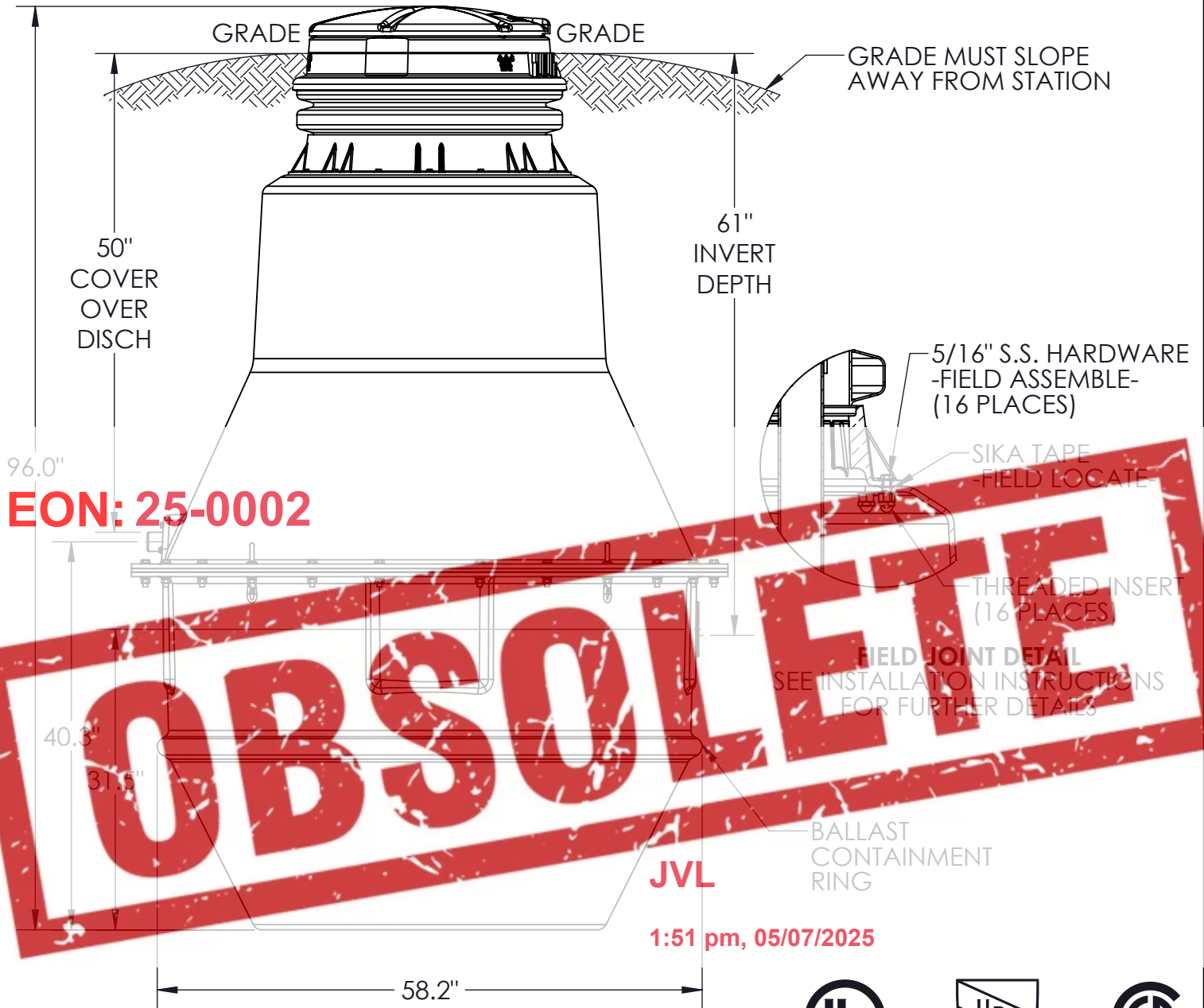


JVL	JG	7/8/2024	F	1:16
DR BY	CHK'D	DATE	ISSUE	SCALE



**MODEL DH272
DETAIL SHEET**

NA0053P02



JVL	JG	7/8/2024	D	1:16
DR BY	CHK'D	DATE	ISSUE	SCALE



MODEL DH272-97

NA0053P04

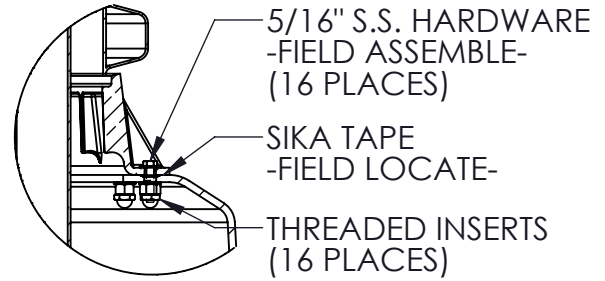
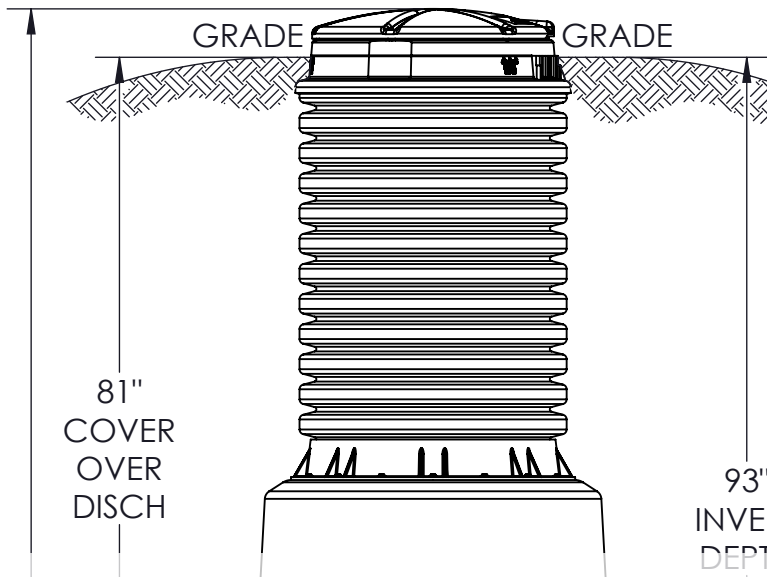
CONCRETE BALLAST MAY BE REQUIRED
SEE INSTALLATION INSTRUCTIONS FOR DETAILS

NOTE: DIMENSIONS ARE FOR REFERENCE ONLY

DISCHARGE: 1-1/4" FEMALE PIPE THREAD

INLET: EPDM GROMMET FOR 4" DWV PIPE
(STANDARD)

DH272-129



FIELD JOINT DETAIL
SEE INSTALLATION INSTRUCTIONS
FOR FURTHER DETAILS

127.5"
EON: 25-0002



JVL
ALLST
CONTAINMENT
PING
1:51 pm, 05/07/2025



JVL	JG	7/9/2024	D	1:20
DR BY	CHK'D	DATE	ISSUE	SCALE

CONCRETE BALLAST MAY BE REQUIRED
SEE INSTALLATION INSTRUCTIONS FOR DETAILS

NOTE: DIMENSIONS ARE FOR REFERENCE ONLY

DISCHARGE: 1-1/4" FEMALE PIPE THREAD

INLET: EPDM GROMMET FOR 4" DWV PIPE
(STANDARD)

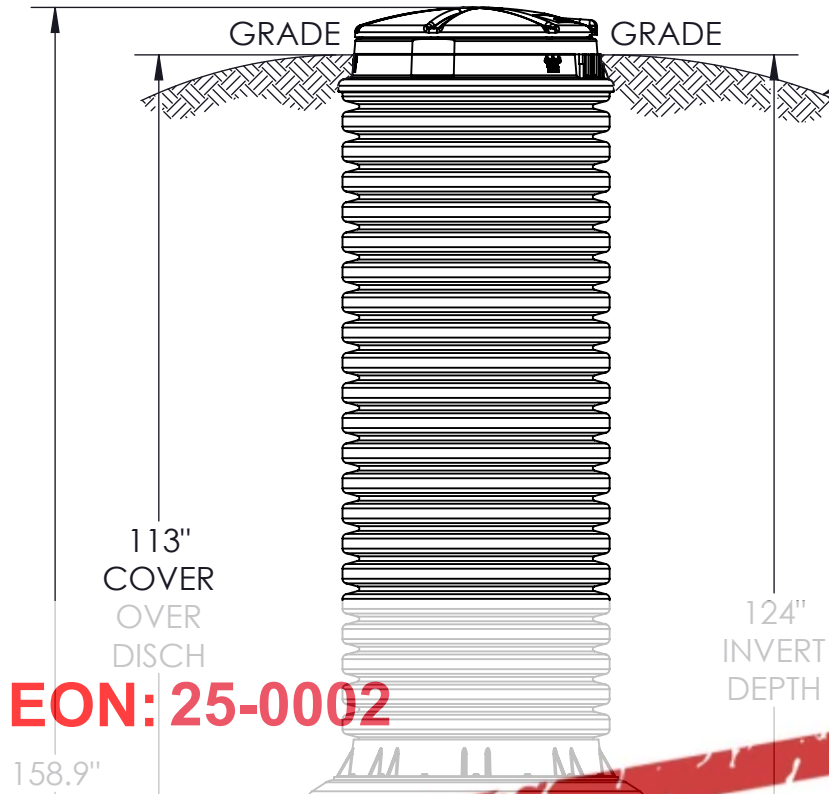


MODEL DH272-129

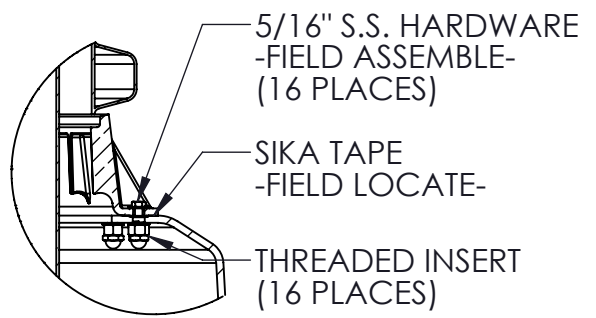
NA0053P05

NA0053P06

DH272-160



GRADE MUST SLOPE AWAY FROM STATION



FIELD JOINT DETAIL
SEE INSTALLATION INSTRUCTIONS FOR FURTHER DETAILS

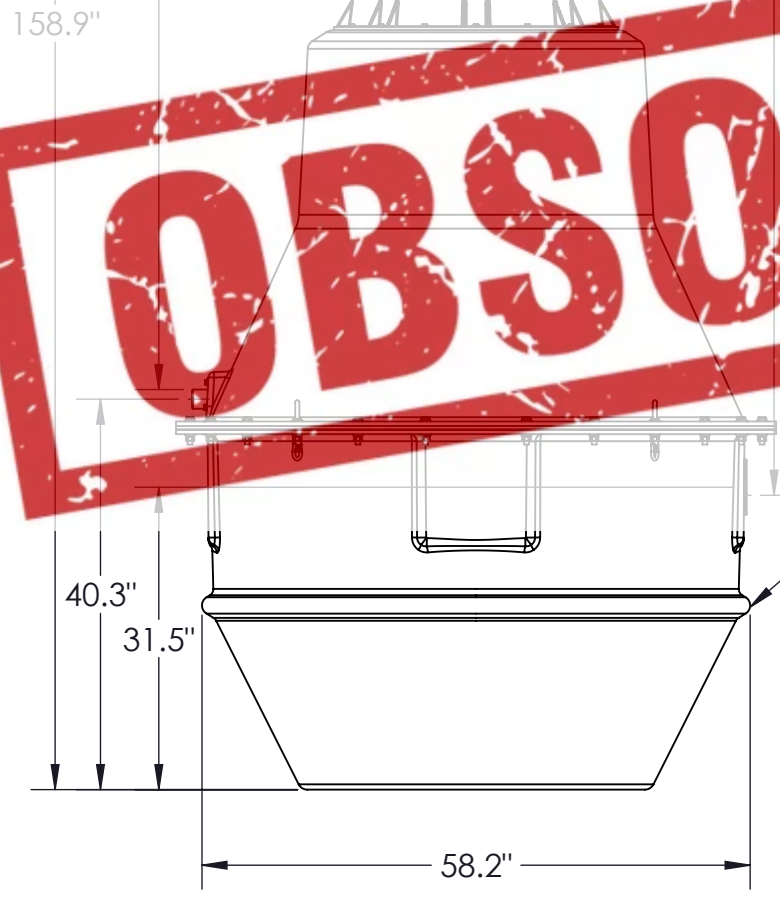
EON: 25-0002

OBSOLETE

CONCRETE BALLAST MAY BE REQUIRED
SEE INSTALLATION INSTRUCTIONS FOR DETAILS
NOTE: DIMENSIONS ARE FOR REFERENCE ONLY

DISCHARGE: 1-1/4" FEMALE PIPE THREAD
INLET: EPDM GROMMET FOR 4" DWV PIPE (STANDARD)

1:51 pm, 05/07/2025



BALLAST CONTAINMENT RING

JVL	JG	7/9/2024	D	1:20
DR BY	CHK'D	DATE	ISSUE	SCALE



MODEL DH272-160

NA0053P06

