

WH471

General Features

The model WH471 grinder pump station is a complete unit that includes: the grinder pump, check valve, polyethylene tank, controls, and alarm panel. Designed specifically for higher-flow applications where local codes dictate higher storage requirements. The lower portion of the tank has a smaller diameter, tapered down to a dish-shaped bottom. The tank access opening is ideally sized for smaller diameter, low-profile covers for minimal “footprint.”

- Rated for flows of 2000 gpd (7571 lpd)
- 476 gallons (1802 liters) of capacity
- Standard outdoor heights range from 77 inches to 122 inches

The WH471 has a cable that connects the motor controls to the level controls through watertight penetrations.

Operational Information

Motor

1 hp, 1,725 rpm, high torque, capacitor start, thermally protected, 120/240V, 60 Hz, 1 phase

Inlet Connections

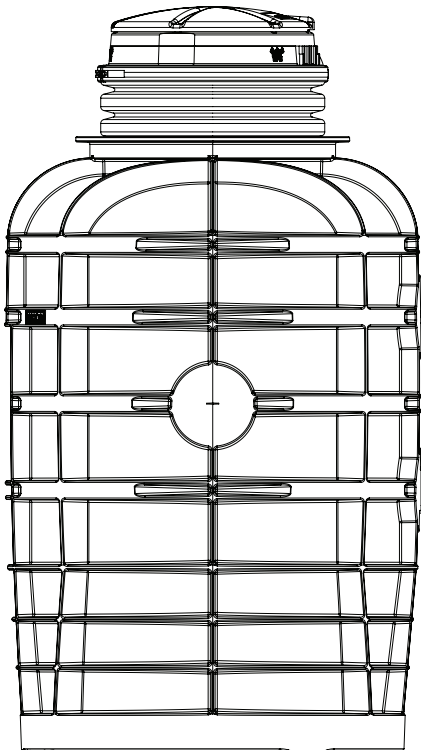
4-inch inlet grommet standard for DWV pipe. Other inlet configurations available from the factory.

Discharge Connections

Pump discharge terminates in 1.25-inch NPT female thread. Can easily be adapted to 1.25-inch PVC pipe or any other material required by local codes.

Discharge

15 gpm at 0 psig (0.95 lps at 0 m)
11 gpm at 40 psig (0.69 lps at 28 m)
7.8 gpm at 80 psig (0.49 lps at 56 m)

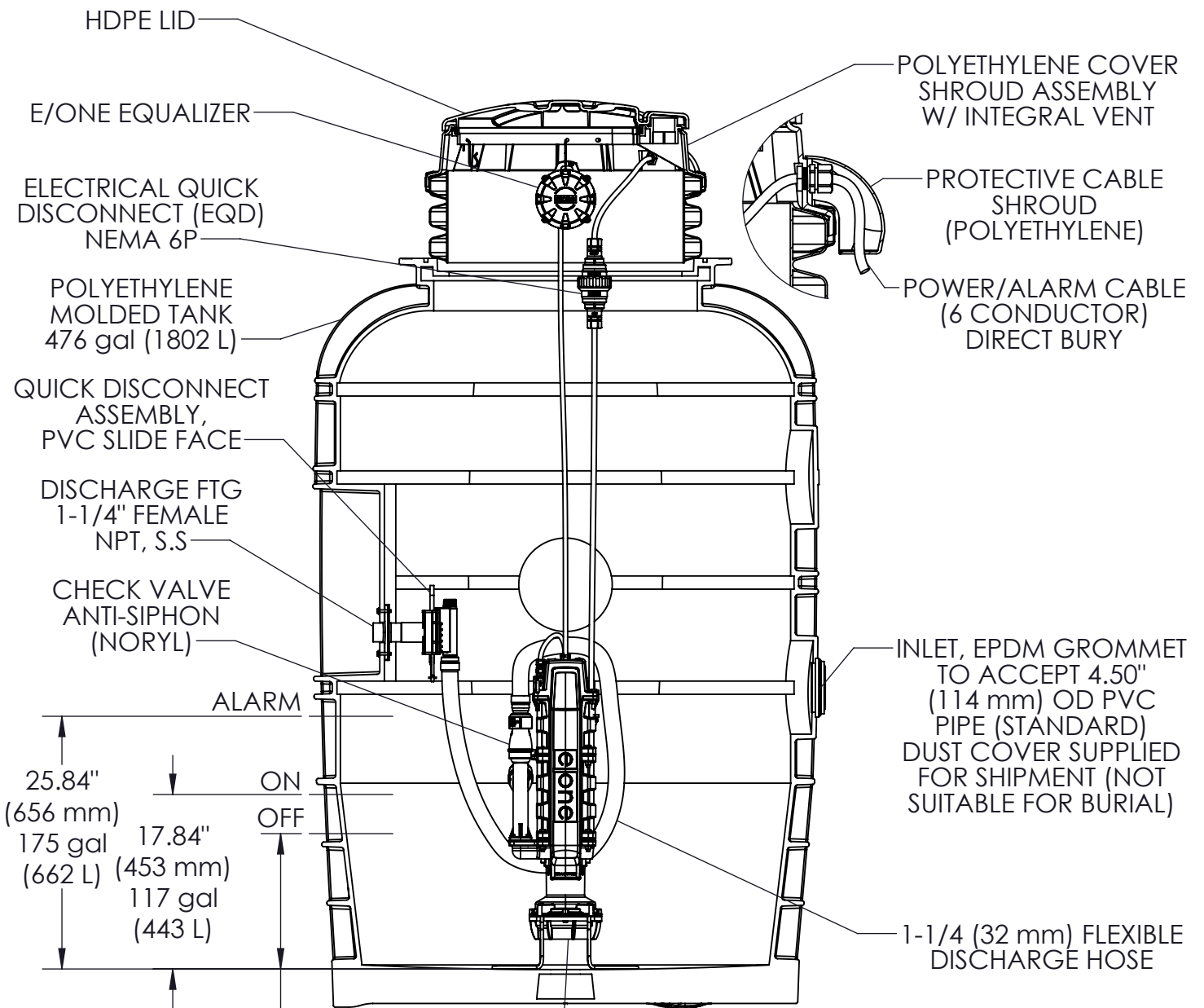


Accessories

E/One requires that the Uni-Lateral, E/One's own stainless steel check valve, be installed between the grinder pump station and the street main for added protection against backflow.

Alarm panels are available with a variety of options, from basic monitoring to advanced notice of service requirements.

The Remote Sentry is ideal for installations where the alarm panel may be hidden from view.



HDPE LID

E/ONE EQUALIZER

ELECTRICAL QUICK DISCONNECT (EQD) NEMA 6P

POLYETHYLENE MOLDED TANK 476 gal (1802 L)

QUICK DISCONNECT ASSEMBLY, PVC SLIDE FACE

DISCHARGE FTG 1-1/4" FEMALE NPT, S.S

CHECK VALVE ANTI-SIPHON (NORYL)

ALARM

25.84" (656 mm)
175 gal (662 L)
17.84" (453 mm)
117 gal (443 L)

ON
OFF

13.84" (352 mm)
89 gal (337 L)

POLYETHYLENE COVER SHROUD ASSEMBLY W/ INTEGRAL VENT

PROTECTIVE CABLE SHROUD (POLYETHYLENE)

POWER/ALARM CABLE (6 CONDUCTOR) DIRECT BURY

INLET, EPDM GROMMET TO ACCEPT 4.50" (114 mm) OD PVC PIPE (STANDARD) DUST COVER SUPPLIED FOR SHIPMENT (NOT SUITABLE FOR BURIAL)

1-1/4 (32 mm) FLEXIBLE DISCHARGE HOSE

SEMI-POSITIVE DISPLACEMENT TYPE PUMP DIRECTLY DRIVEN BY A 1 HP MOTOR



JVL	JG	6/27/2024	D	1:16
DR BY	CHK'D	DATE	ISSUE	SCALE



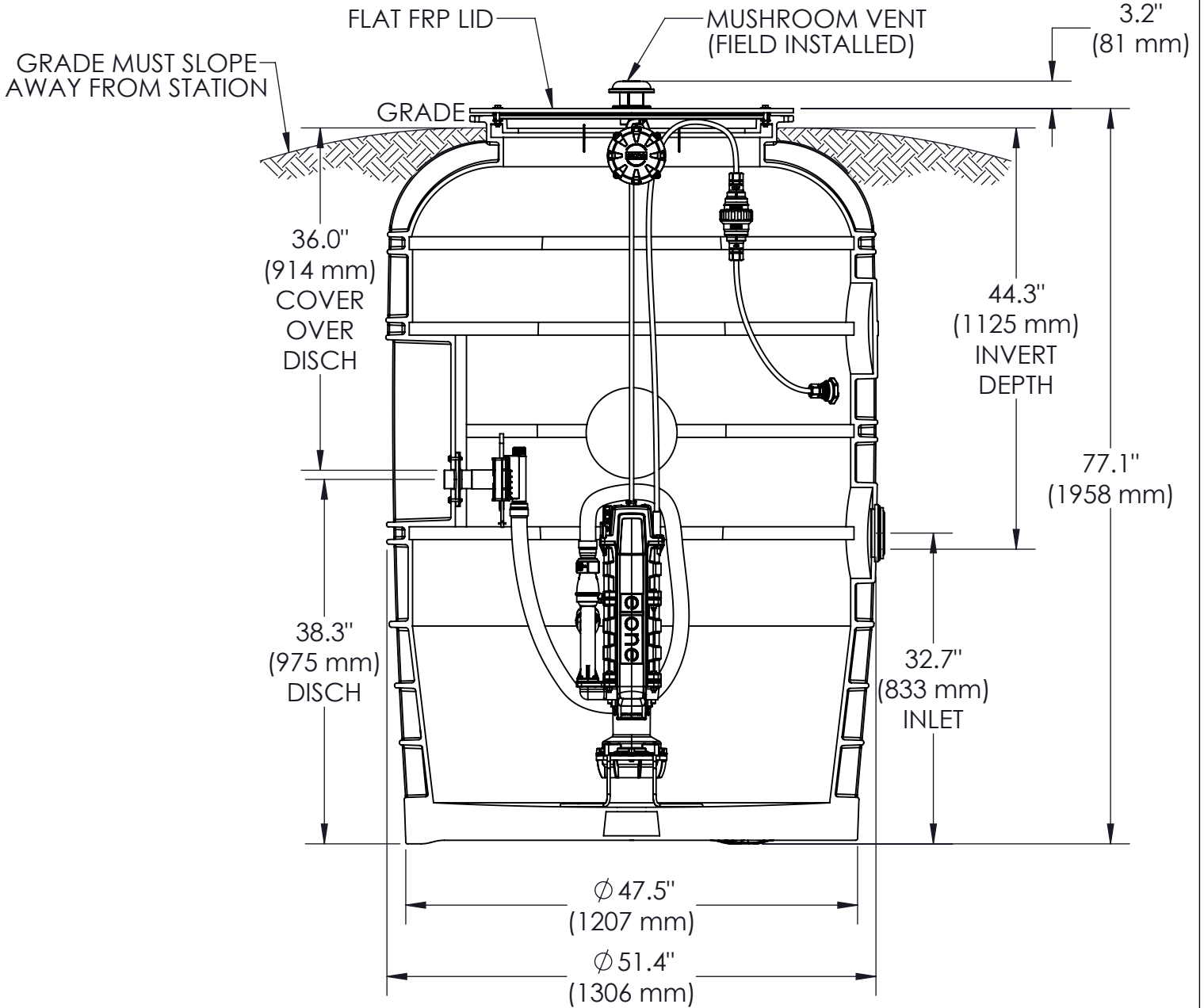
SEWER SYSTEMS

**MODEL WH471
DETAIL SHEET**

NA0210P02

CONCRETE BALLAST MAY BE REQUIRED SEE INSTALLATION INSTRUCTIONS FOR DETAIL

NOTE: DIMENSIONS FOR FOR REFERENCE ONLY



CONCRETE BALLAST MAY BE REQUIRED
SEE INSTALLATION INSTRUCTIONS FOR DETAILS

NOTE: DIMENSIONS ARE FOR REFERENCE ONLY

DISCHARGE: 1-1/4 NPT, SS

INLET: EPDM GROMMET FOR 4" DWV PIPE
(STANDARD)



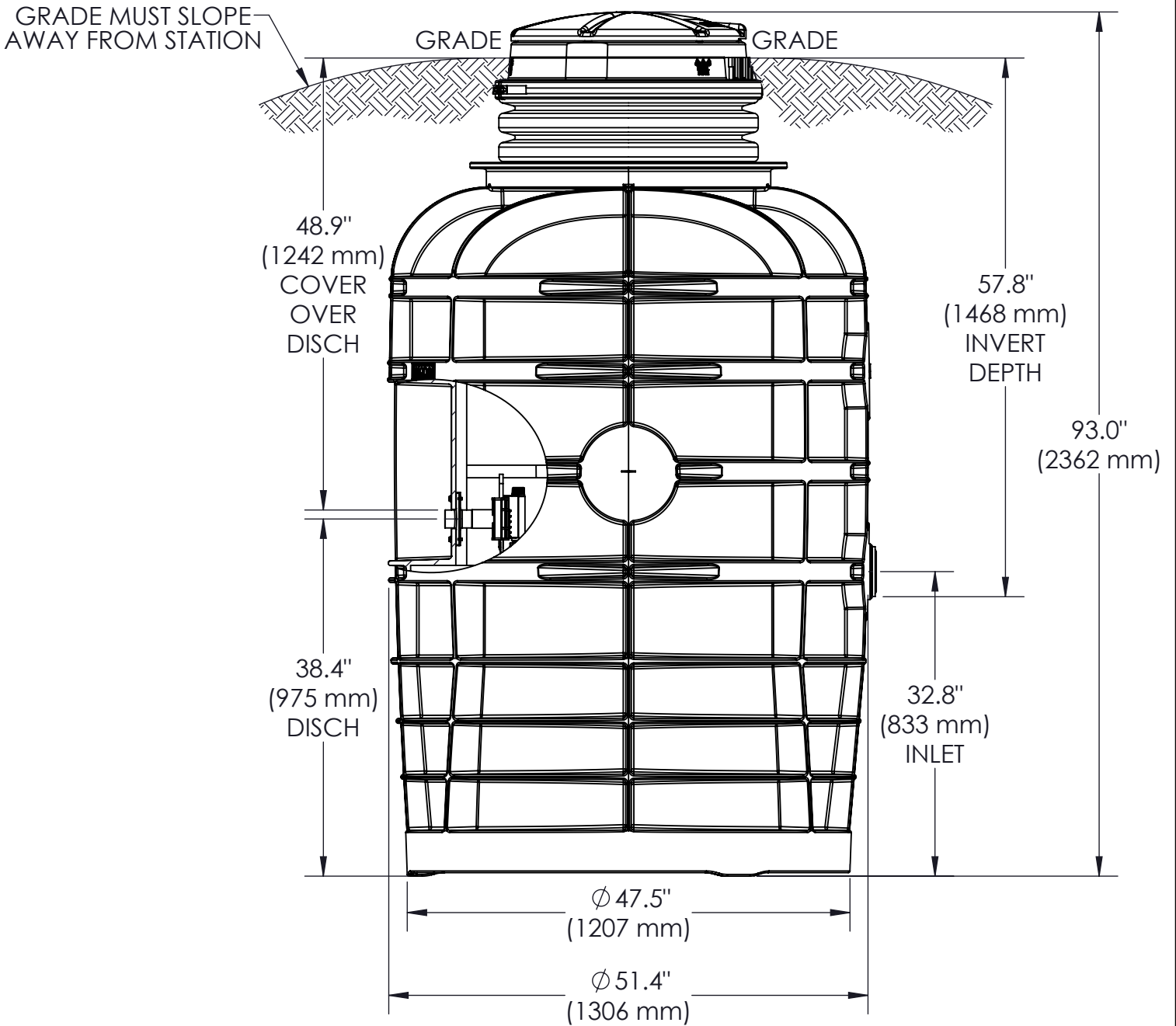
JVL	JG	6/28/2024	C	1:16
DR BY	CHK'D	DATE	ISSUE	SCALE



MODEL WH471-77

NA0210P03

WH471-92



CONCRETE BALLAST MAY BE REQUIRED
SEE INSTALLATION INSTRUCTIONS FOR DETAILS

NOTE: DIMENSIONS ARE FOR REFERENCE ONLY

DISCHARGE: 1-1/4 NPT, SS

INLET: EPDM GROMMET FOR 4" DWV PIPE
(STANDARD)

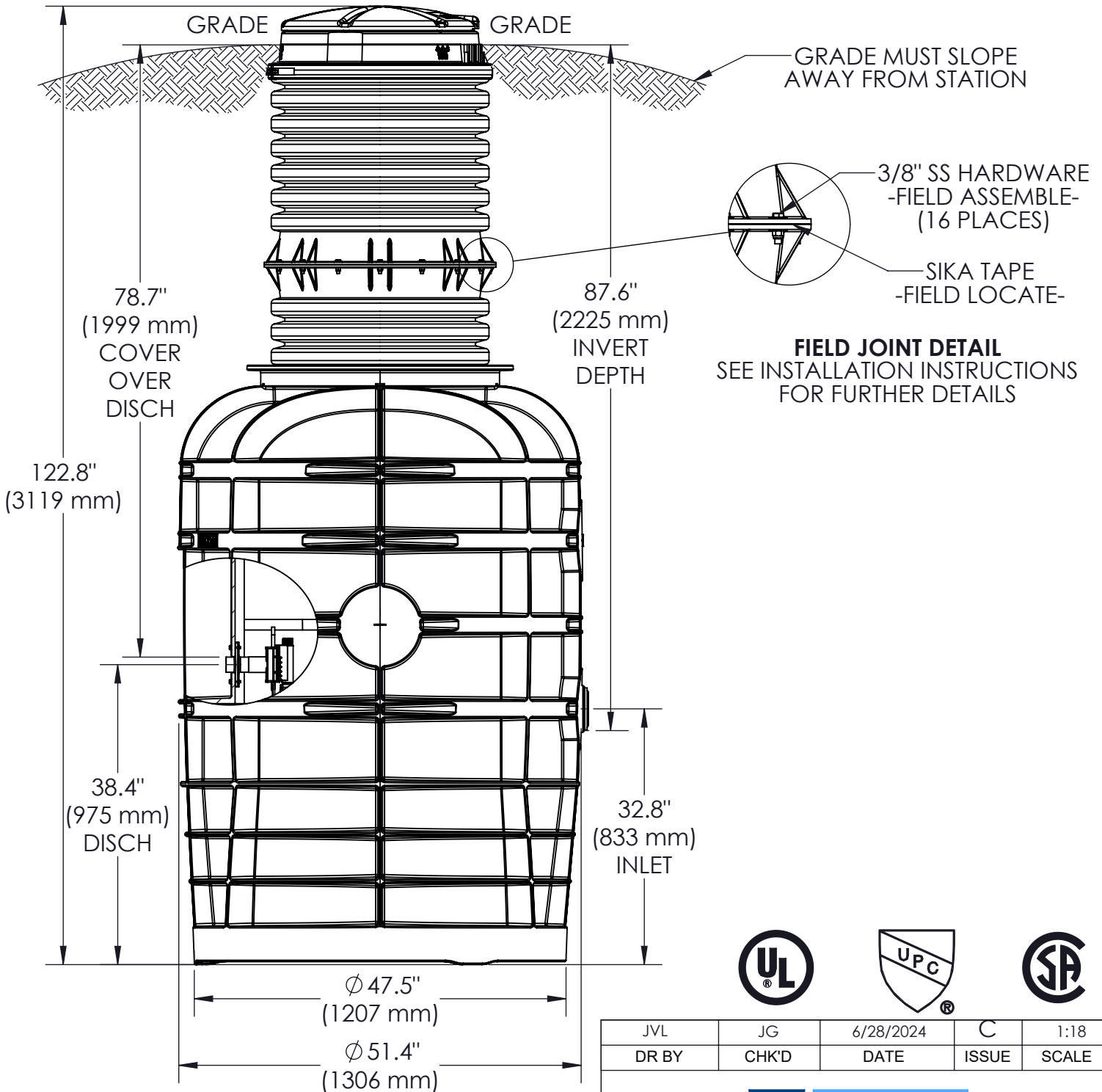


JVL	JG	6/28/2024	C	1:16
DR BY	CHK'D	DATE	ISSUE	SCALE



MODEL WH471-92

NA0210P04



FIELD JOINT DETAIL
SEE INSTALLATION INSTRUCTIONS FOR FURTHER DETAILS



JVL	JG	6/28/2024	C	1:18
DR BY	CHK'D	DATE	ISSUE	SCALE



MODEL WH471-122

NA0210P05

CONCRETE BALLAST MAY BE REQUIRED
SEE INSTALLATION INSTRUCTIONS FOR DETAILS

NOTE: DIMENSIONS ARE FOR REFERENCE ONLY

DISCHARGE: 1-1/4 NPT, SS

INLET: EPDM GROMMET FOR 4" DWV PIPE
(STANDARD)