

DX352

Description

The E/One model DX explosionproof grinder pump is engineered to meet the stringent Factory Mutual™ explosionproof equipment standards for use in locations classified as Class I, Division 1, Group D (approval standards 3600, 3610, and 3615). The DX352 is a 350-gallon capacity grinder pump station that contains two explosionproof grinder pumps. Note: Only the pumps are listed by FM for explosionproof equipment.

General Features

The DX352 comes complete with a self-contained level control system, eliminating troublesome float switches. The pump uses radio frequency identification (RFID) technology to communicate between the level controls and the motor controls. The grinder pumps are automatically activated and run infrequently for very short periods.

The internal check valve assemblies, located in the grinder pumps, are custom-designed for non-clog, trouble-free operation.

- 350 gallons (1,325 liters) of capacity; polyethylene tank and HDPE lid
- Rated for flows of 5200 gpd (19,684 lpd)
- Available in heights of 129 inches and 160 inches

E/One requires that the Uni-Lateral, E/One's own stainless steel check valve, be installed between the grinder pump station and the street main for added protection against backflow.

Operational Information

Motors

1 hp, 1,725 rpm, high torque, capacitor start, thermally protected, 240V, 60 Hz, 1 phase

Inlet Connections

4-inch inlet grommet standard for DWV pipe. Other inlet configurations available from the factory.

Discharge Connections

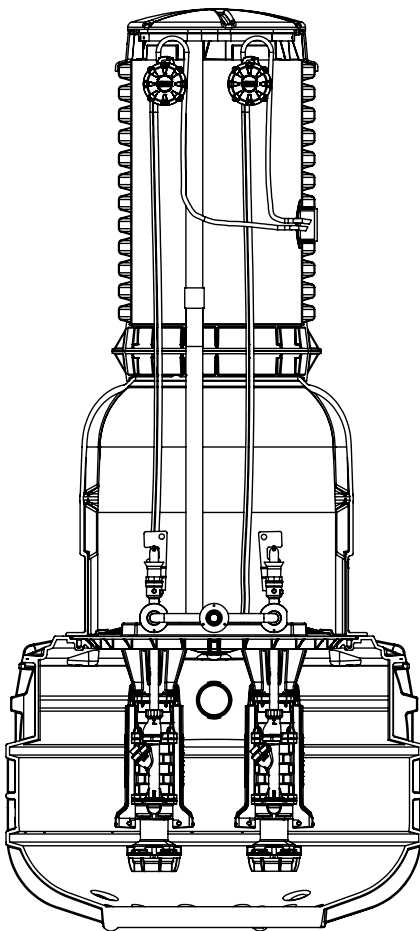
Pump discharge terminates in 1.25-inch NPT female thread. Can easily be adapted to 1.25-inch PVC pipe or any other material required by local codes.

Discharge (per pump)

15 gpm at 0 psig (0.95 lps at 0 m)

11 gpm at 40 psig (0.69 lps at 28 m)

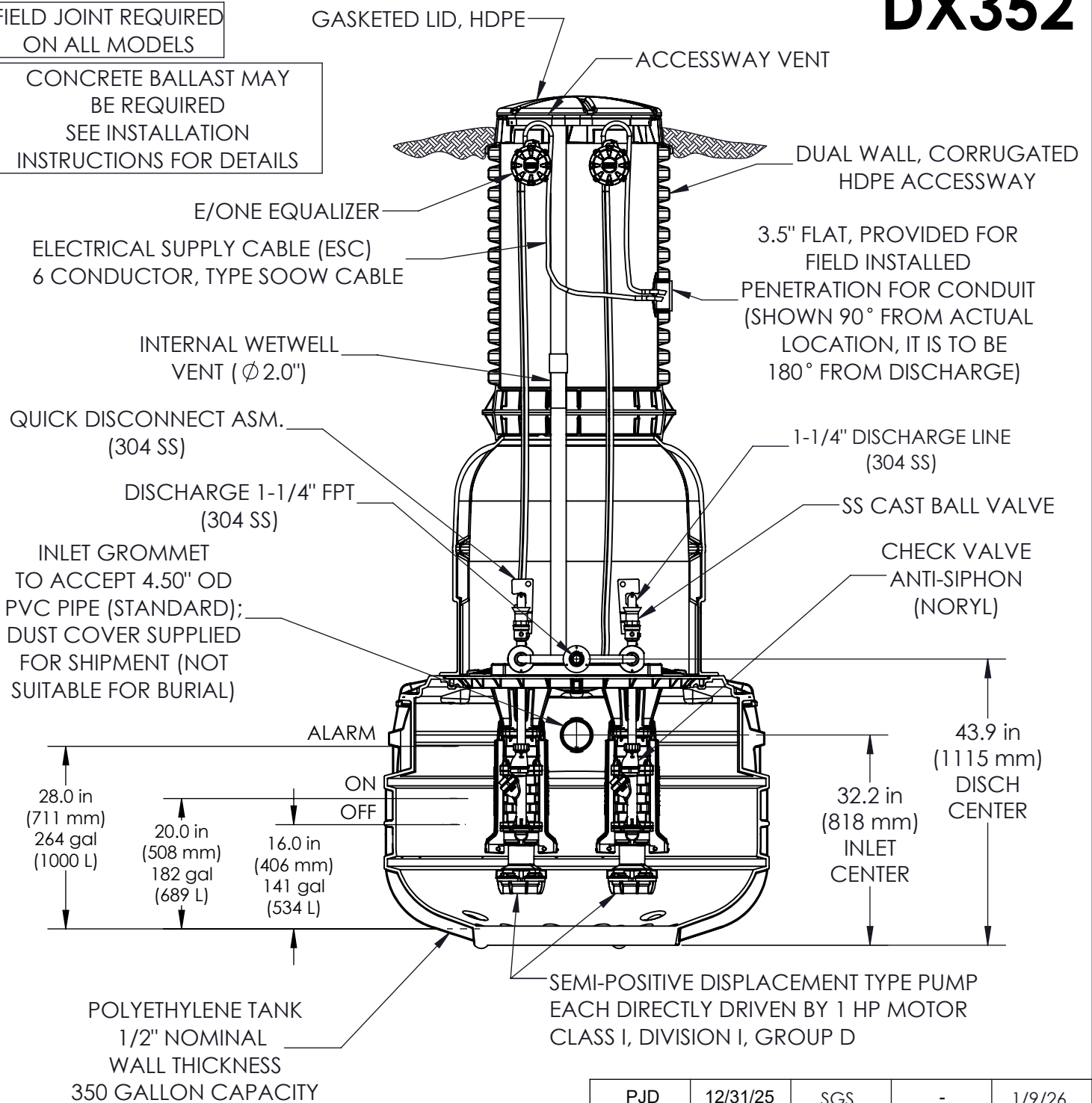
7.8 gpm at 80 psig (0.49 lps at 56 m)



DX352

FIELD JOINT REQUIRED
ON ALL MODELS

CONCRETE BALLAST MAY
BE REQUIRED
SEE INSTALLATION
INSTRUCTIONS FOR DETAILS



NOTE:
THE PUMP ASSEMBLIES ARE LISTED BY ETL TO FACTORY MUTUAL (FM) STANDARDS FOR CLASS I, DIVISION I, GROUP D. THE LEVEL CONTROL SYSTEM, INTEGRAL TO THE PUMP, IS INTRINSICALLY SAFE. (THE STATION IS NOT PART OF THE LISTING)
-ALSO AVAILABLE APPROVED BY CSA FOR CLASS I, DIVISION 1, GROUP D

DIMENSIONS ARE FOR REFERENCE ONLY

PJD	12/31/25	SGS	-	1/9/26
DR BY	DATE	CHK'D	ISSUE	DATE



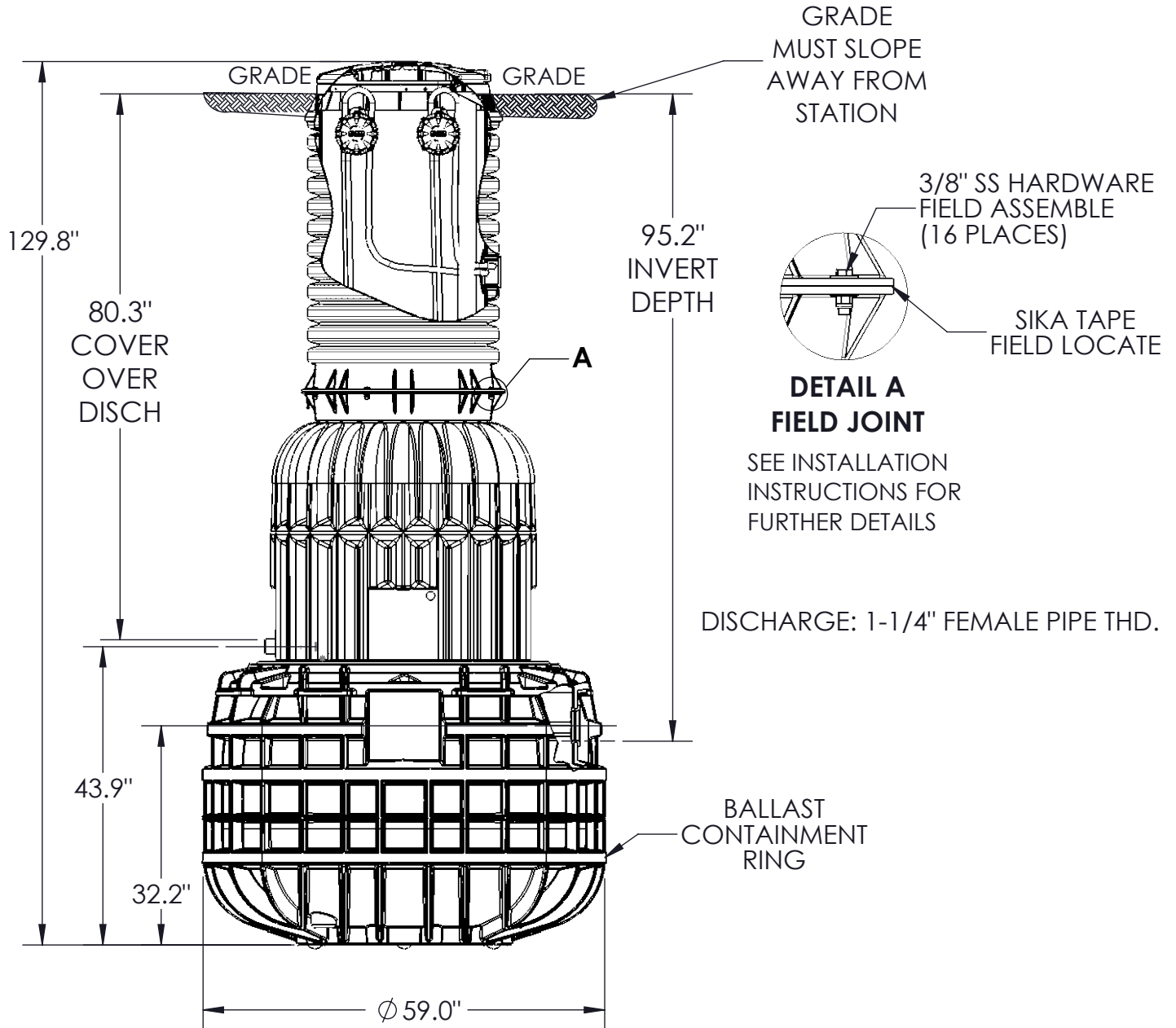
ENVIRONMENT ONE CORPORATION

MODEL DX352, EXPLOSION PROOF PUMP
DETAIL SHEET

NA0905P02

DX352-129

CONCRETE BALLAST MAY BE REQUIRED
SEE INSTALLATION INSTRUCTIONS
FOR DETAILS



NOTE:

THE PUMP ASSEMBLIES ARE LISTED BY ETL TO FACTORY MUTUAL (FM) STANDARDS FOR CLASS I, DIVISION I, GROUP D. THE LEVEL CONTROL SYSTEM, INTEGRAL TO THE PUMP, IS INTRINSICALLY SAFE. (THE STATION IS NOT PART OF THE LISTING)
-ALSO AVAILABLE APPROVED BY CSA FOR CLASS I, DIVISION I, GROUP D

DIMENSIONS ARE FOR REFERENCE ONLY

MAL	4/6/26	PJD	-	4/7/26
DR BY	DATE	CHK'D	ISSUE	DATE

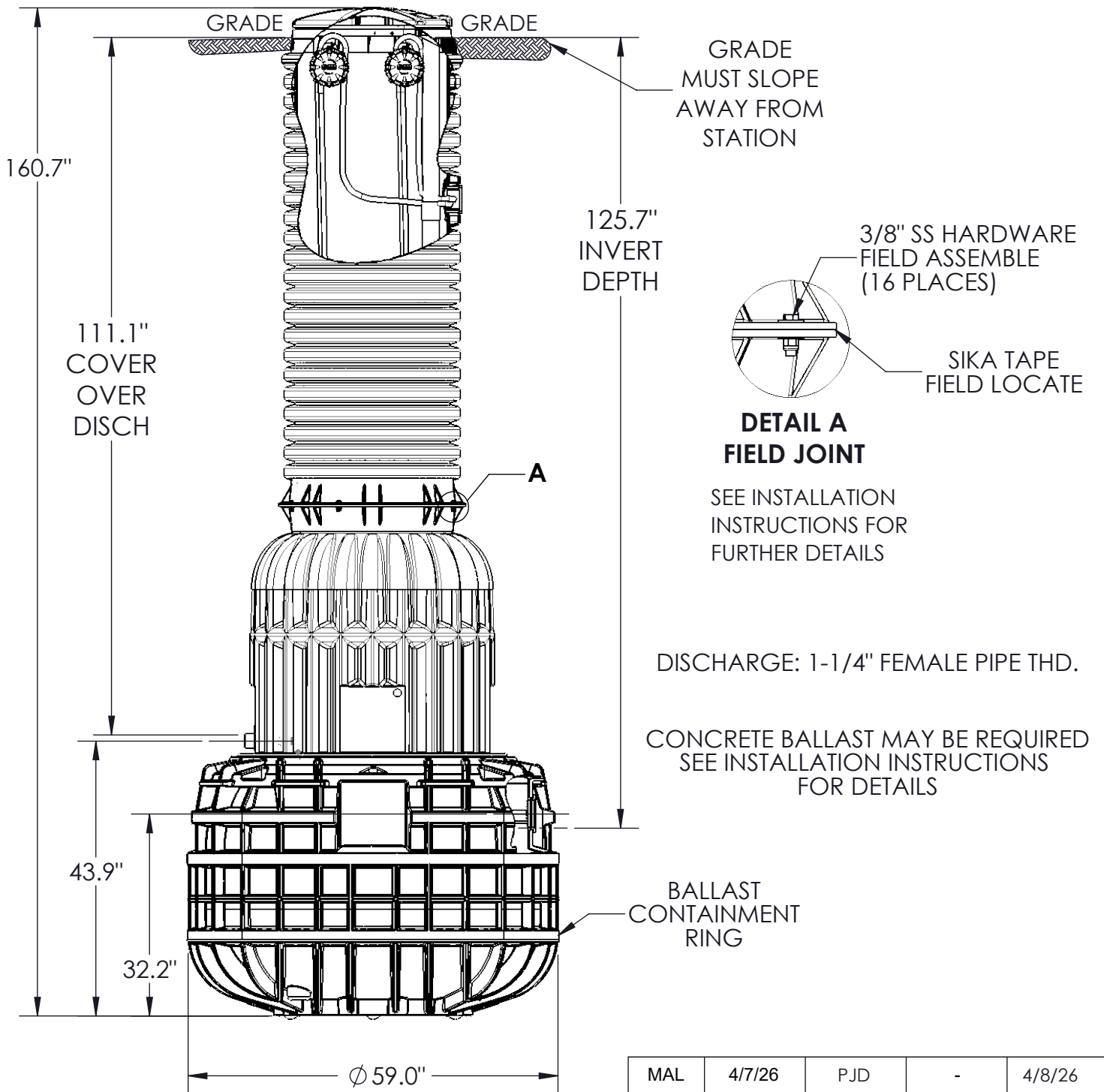


ENVIRONMENT ONE CORPORATION

MODEL DX352-129
EXPLOSIONPROOF PUMP

NA0905P03

DX352-160



NOTE:

THE PUMP ASSEMBLIES ARE LISTED BY ETL TO FACTORY MUTUAL (FM) STANDARDS FOR CLASS I, DIVISION I, GROUP D. THE LEVEL CONTROL SYSTEM, INTEGRAL TO THE PUMP, IS INTRINSICALLY SAFE. (THE STATION IS NOT PART OF THE LISTING)
 -ALSO AVAILABLE APPROVED BY CSA FOR CLASS I, DIVISION I, GROUP D

DIMENSIONS ARE FOR REFERENCE ONLY

MAL	4/7/26	PJD	-	4/8/26
DR BY	DATE	CHK'D	ISSUE	DATE



ENVIRONMENT ONE CORPORATION

MODEL DX352-160
 EXPLOSIONPROOF PUMP

NA0905P04