

WH483

General Features

The model WH483 grinder pump station is a complete unit that includes: three grinder pumps, check valve, polyethylene tank, controls, and alarm panel. Designed for higher flow applications where local codes dictate higher storage requirements. The lower portion of the tank has a smaller diameter, tapered down to a dish-shaped bottom. The large tank access opening easily accommodates installation of the grinder pumps and equipment.

- Rated for flows of 5000 gpd (18,927 lpd)
- 486 gallons (1840 liters) of capacity
- Standard outdoor heights range from 75 inches to 122 inches

The WH483 has a cable that connects the motor controls to the level controls through watertight penetrations.

Operational Information

Motor

1 hp, 1,725 rpm, high torque, capacitor start, thermally protected, 120/240V, 60 Hz, 1 phase

Inlet Connections

4-inch inlet grommet standard for DWV pipe. Other inlet configurations available from the factory.

Discharge Connections

Pump discharge terminates in 1.25-inch NPT female thread. Can easily be adapted to 1.25-inch PVC pipe or any other material required by local codes.

Discharge

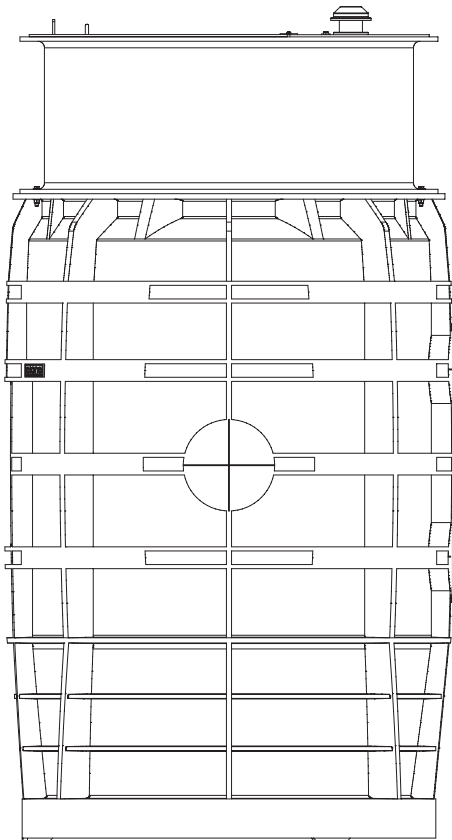
15 gpm at 0 psig (0.95 lps at 0 m)
11 gpm at 40 psig (0.69 lps at 28 m)
7.8 gpm at 80 psig (0.49 lps at 56 m)

Accessories

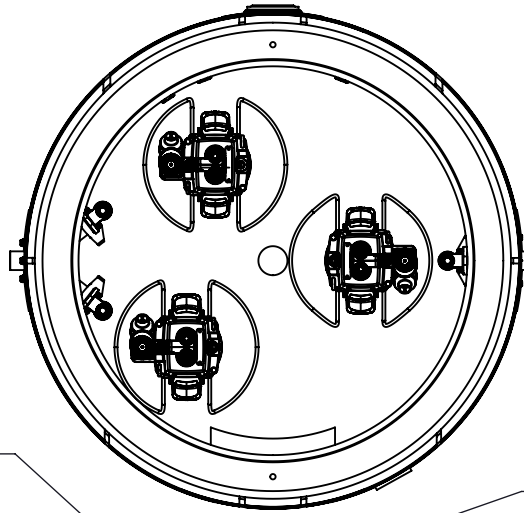
E/One requires that the Uni-Lateral, E/One's own stainless steel check valve, be installed between the grinder pump station and the street main for added protection against backflow.

Alarm panels are available with a variety of options, from basic monitoring to advanced notice of service requirements.

The Remote Sentry is ideal for installations where the alarm panel may be hidden from view.



STATION USES 1 DUPLEX
MOD T260 ALARM PANEL
AND 1 SIMPLEX SENTRY
ALARM PANEL



TOP VIEW W/ LID NOT SHOWN

1/3-2/3 SPLIT COVER
W/ HANDLE & PADLOCK
STAPLE (ALUMINUM)

TANK ACCESSWAY
SECTION (FIBERGLASS)

POWER/ALARM CABLE
(6 CONDUCTOR)
DIRECT BURY

BULKHEAD FITTING

CABLE CONNECTOR

DISCHARGE WYE
MANIFOLD, SS

CHECK VALVE
ANTI-SIPHON
(NORYL)

MUSHROOM VENT

E/ONE EQUALIZER

ELECTRICAL QUICK
DISCONNECT (EQD)
NEMA 6P

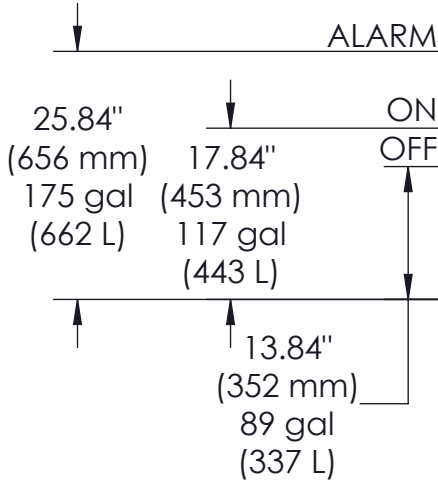
POLYETHYLENE MOLDED TANK
486 gal (1840 L)

QUICK DISCONNECT ASSEMBLY
PVC SLIDE FACE

DISCHARGE FTG 1-1/4"
FEMALE NPT, SS (X2)

INLET, EPDM GROMMET TO
ACCEPT 4.50" (114 mm) O.D.
PVC PIPE (STANDARD) DUST
COVER SUPPLIED FOR SHIPMENT
(NOT SUITABLE FOR BURIAL)

1-1/4" (32 mm) FLEXIBLE
DISCHARGE HOSE



SEMI-POSITIVE DISPLACEMENT TYPE PUMP
DIRECTLY DRIVEN BY A 1 HP MOTOR

BACK-UP PUMP ON STANDS 4" (102 mm)
TALLER THAN OTHER PUMPS

CONCRETE BALLAST MAY BE REQUIRED
SEE INSTALLATION INSTRUCTIONS FOR DETAILS

NOTE: DIMENSIONS ARE FOR REFERENCE ONLY



JVL	JG	7/3/2024	C	1:20
DR BY	CHK'D	DATE	ISSUE	SCALE

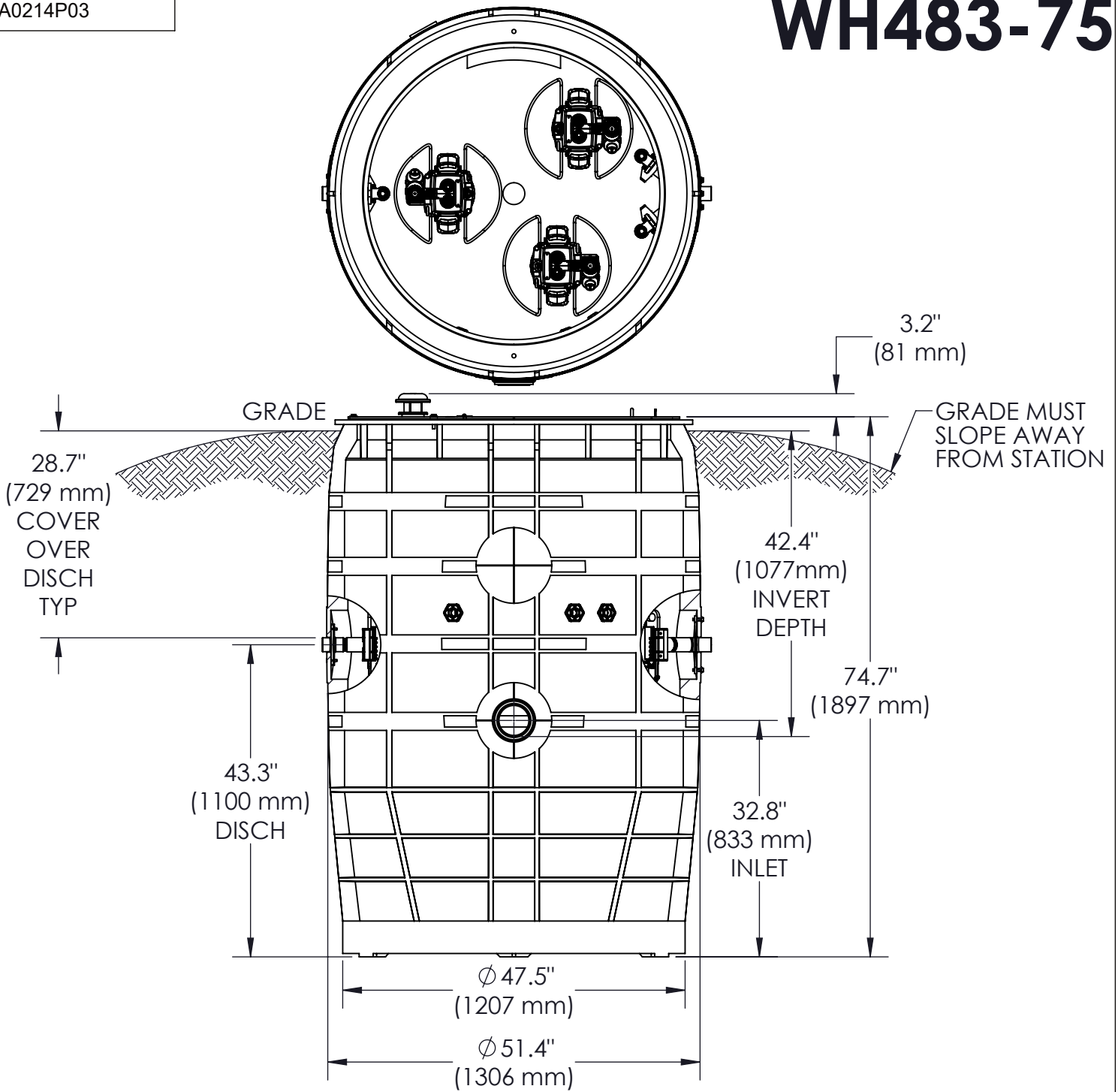


SEWER SYSTEMS

**MODEL WH483
DETAIL SHEET, TRIPLEX**

NA0214P02

WH483-75



CONCRETE BALLAST MAY BE REQUIRED
SEE INSTALLATION INSTRUCTIONS FOR DETAILS

NOTE: DIMENSIONS ARE FOR REFERENCE ONLY

DISCHARGE: 1-1/4" NPT, SS (X2)

INLET: EPDM GROMMET FOR 4" DWV PIPE
(STANDARD)



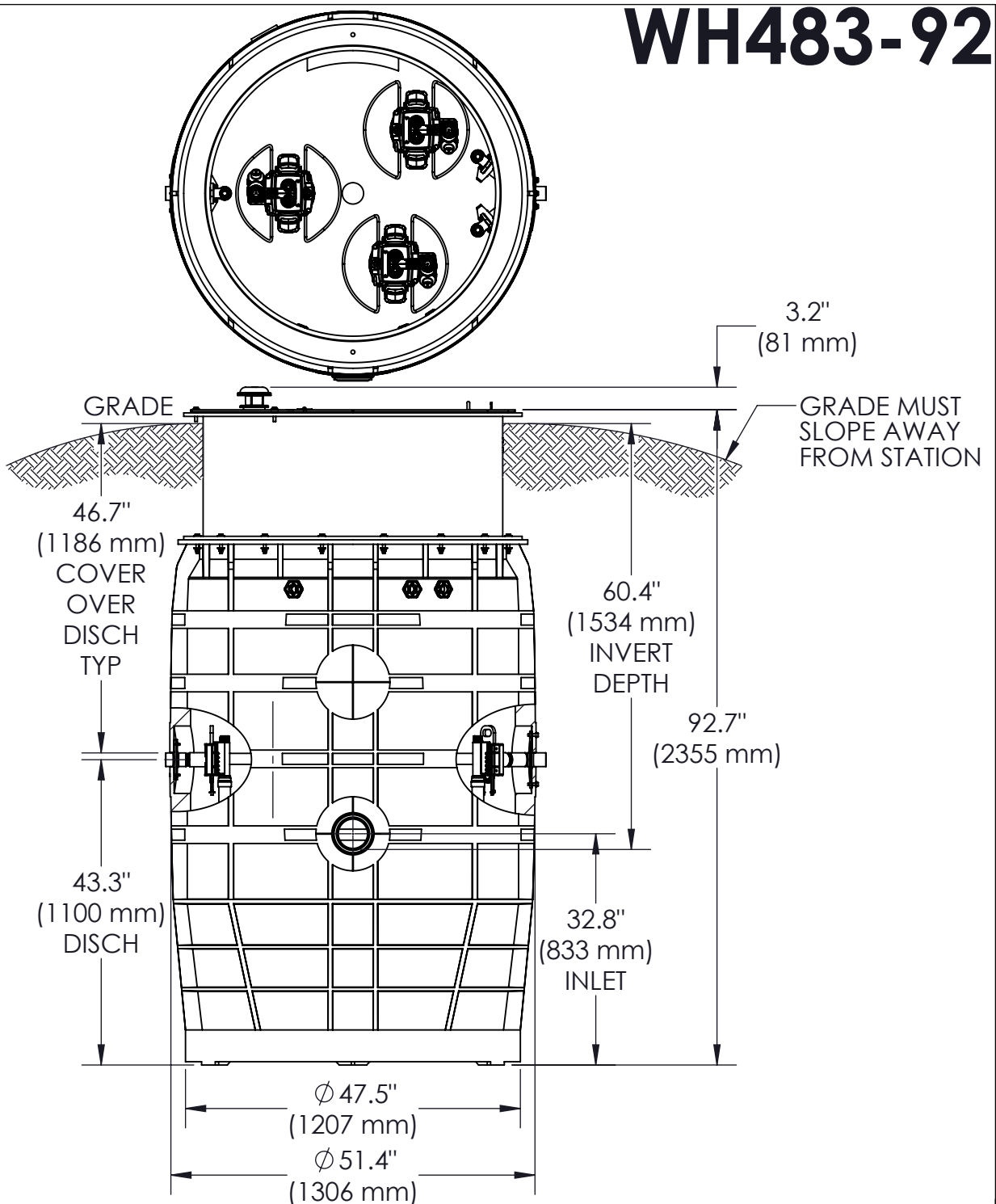
JVL	JG	7/3/2024	B	1:20
DR BY	CHK'D	DATE	ISSUE	SCALE



MODEL WH483-75

NA0214P03

WH483-92



CONCRETE BALLAST MAY BE REQUIRED
SEE INSTALLATION INSTRUCTIONS FOR DETAILS

NOTE: DIMENSIONS ARE FOR REFERENCE ONLY

DISCHARGE: 1-1/4" NPT, SS (X2)

INLET: EPDM GROMMET FOR 4" DWV PIPE
(STANDARD)



JVL	JG	7/3/2024	B	1:22
DR BY	CHK'D	DATE	ISSUE	SCALE

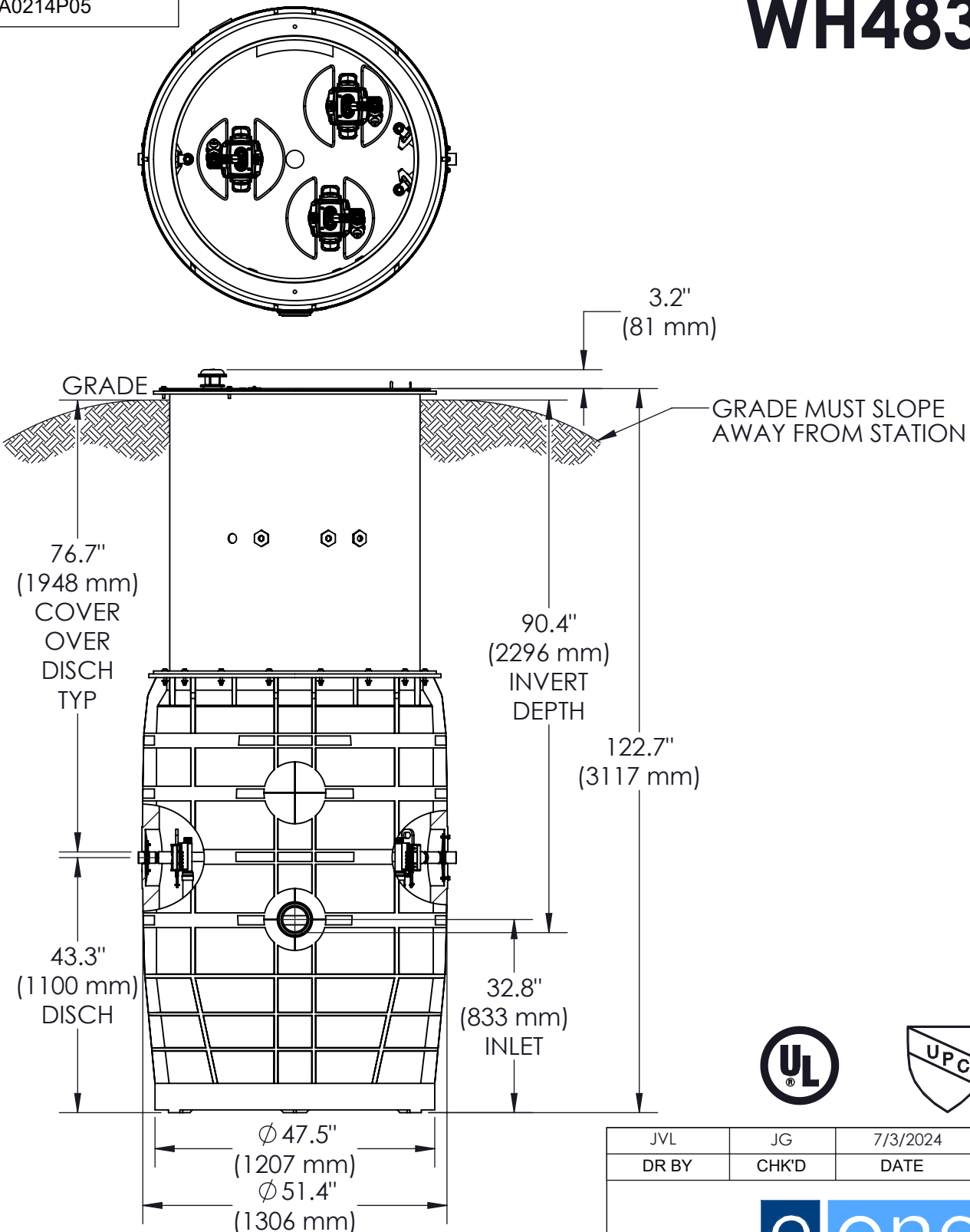


MODEL WH483-92

NA0214P04

NA0214P05

WH483-122



JVL	JG	7/3/2024	B	1:25
DR BY	CHK'D	DATE	ISSUE	SCALE



MODEL WH483-122

NA0214P05

CONCRETE BALLAST MAY BE REQUIRED
SEE INSTALLATION INSTRUCTIONS FOR DETAILS

NOTE: DIMENSIONS ARE FOR REFERENCE ONLY

DISCHARGE: 1-1/4" NPT, SS (X2)

INLET: EPDM GROMMET FOR 4" DWV PIPE
(STANDARD)