

Upgrade

General Features

The Upgrade grinder pump is engineered to fit into virtually any grinder pump wetwell. Universal design allows easy drop-in conversion, ready to connect. The Upgrade is a complete replacement for all of the troublesome components of a centrifugal pump station, including the old unit's slide rails, pump/motor, float switches, piping, and motor control devices.

- Designed not to jam and for minimum wear to the grinding mechanism
- Retrofit simplex or larger stations
- Available with a range of discharge hose lengths to accommodate a wide range of tank depths

The Upgrade comes complete with a self-contained level control system, eliminating troublesome float switches. The internal check valve assembly located on the grinder pump is custom designed for non-clog, trouble-free operation. The Upgrade uses a cable that connects the motor controls to the level controls through watertight penetrations.

Operational Information

Motor

1 hp, 1,725 rpm, high torque, capacitor start, thermally protected, 120/240V, 60 Hz, 1 phase

Discharge Connections

Pump discharge terminates in 1.25-inch female solvent weld fitting; threaded adapter is supplied and discharge can easily be adapted to 1.25-inch NPT.

Discharge

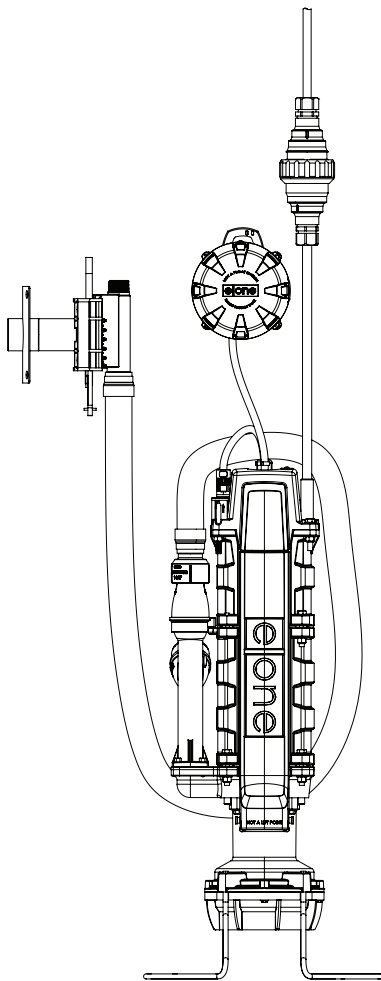
15 gpm at 0 psig (0.95 lps at 0 m)
11 gpm at 40 psig (0.69 lps at 28 m)
7.8 gpm at 80 psig (0.49 lps at 56 m)

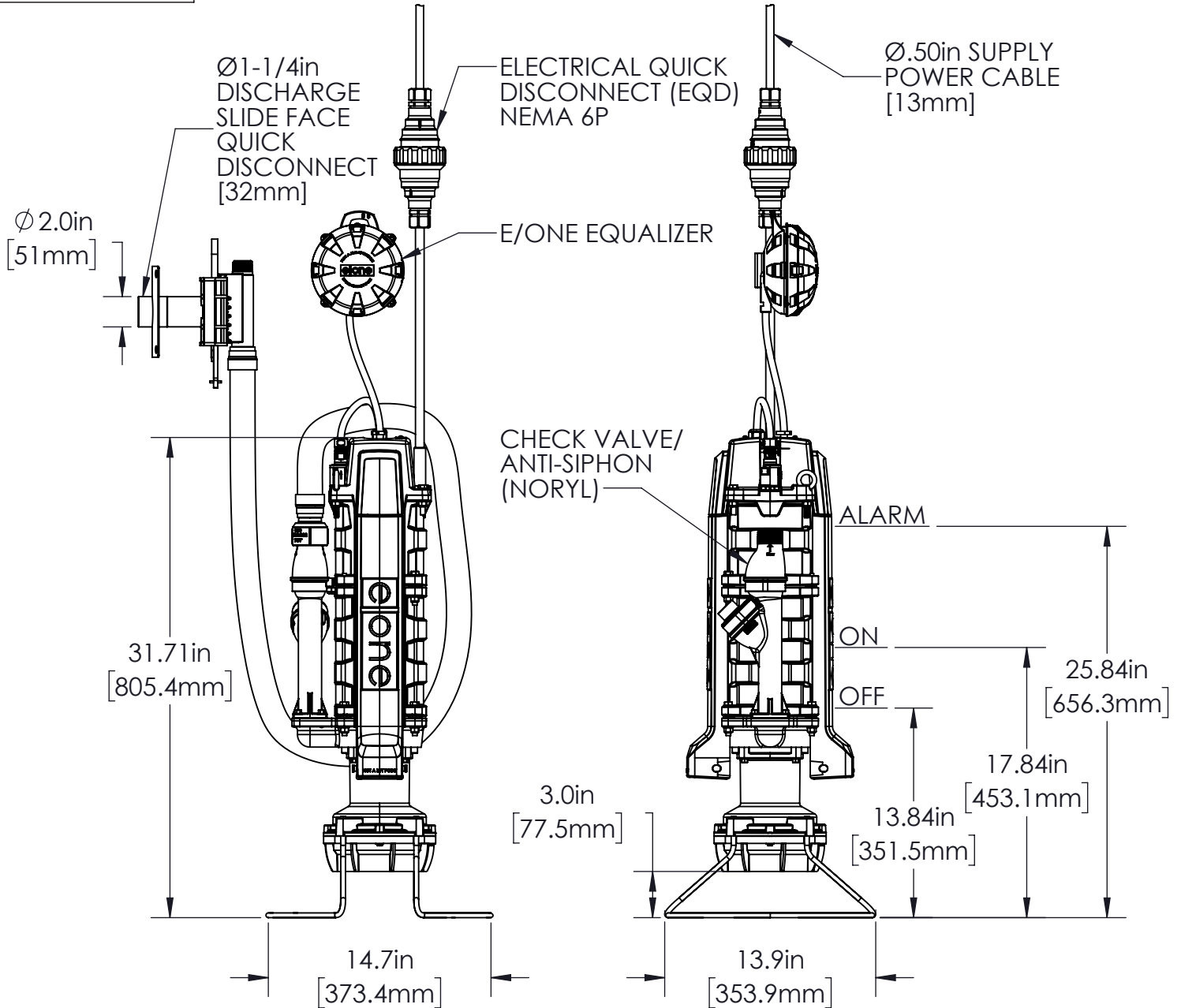
Accessories

E/One recommends that the Uni-Lateral, E/One's own stainless steel check valve, be installed between the grinder pump station and the street main for added protection against backflow.

Alarm panels are available with a variety of options, from basic monitoring to advanced notice of service requirements.

The Remote Sentry is ideal for installations where the alarm panel may be hidden from view.





UPGRADE GRINDER PUMP

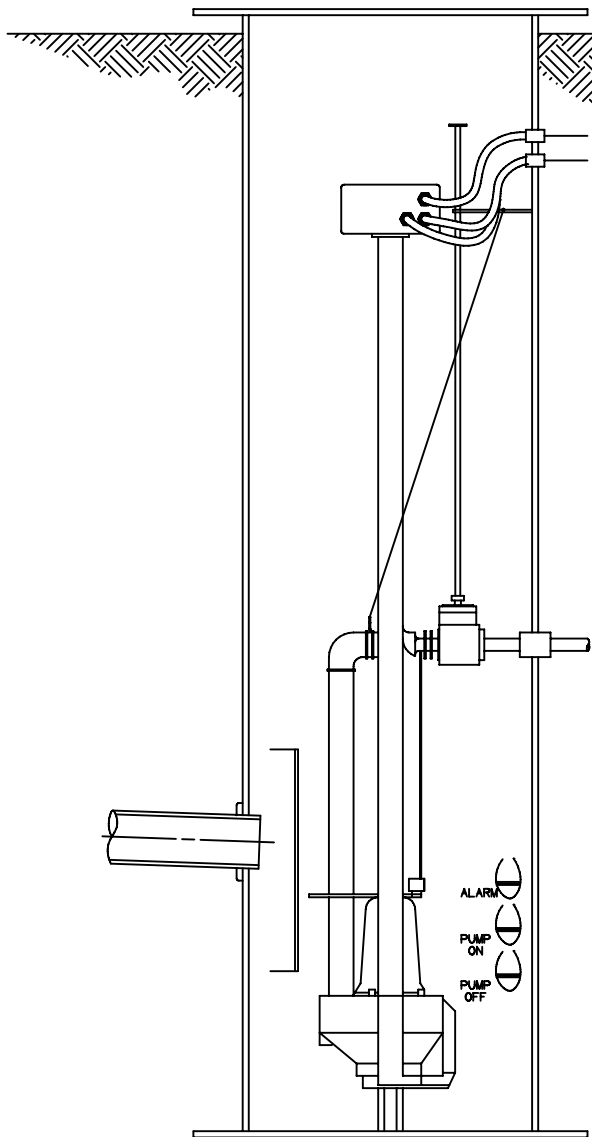
JVL	JG	8/5/2024	C	1:10
DR BY	CHK'D	DATE	ISSUE	SCALE



DIMENSION SHEET, UPGRADE

NA0055P02

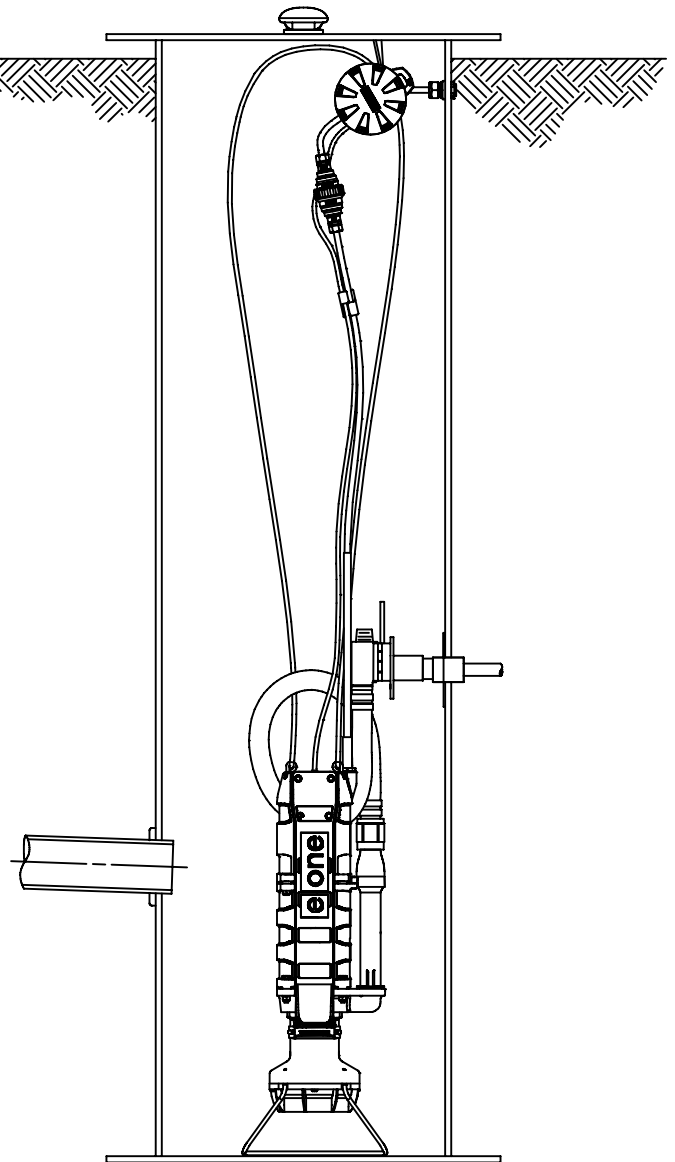
BEFORE



CENTRIFUGAL STATION
TO BE UPGRADED

TO...

AFTER



eone UPGRADE



LNT	GAE	04/24/07	-	
DR BY	CHK'D	DATE	ISSUE	SCALE



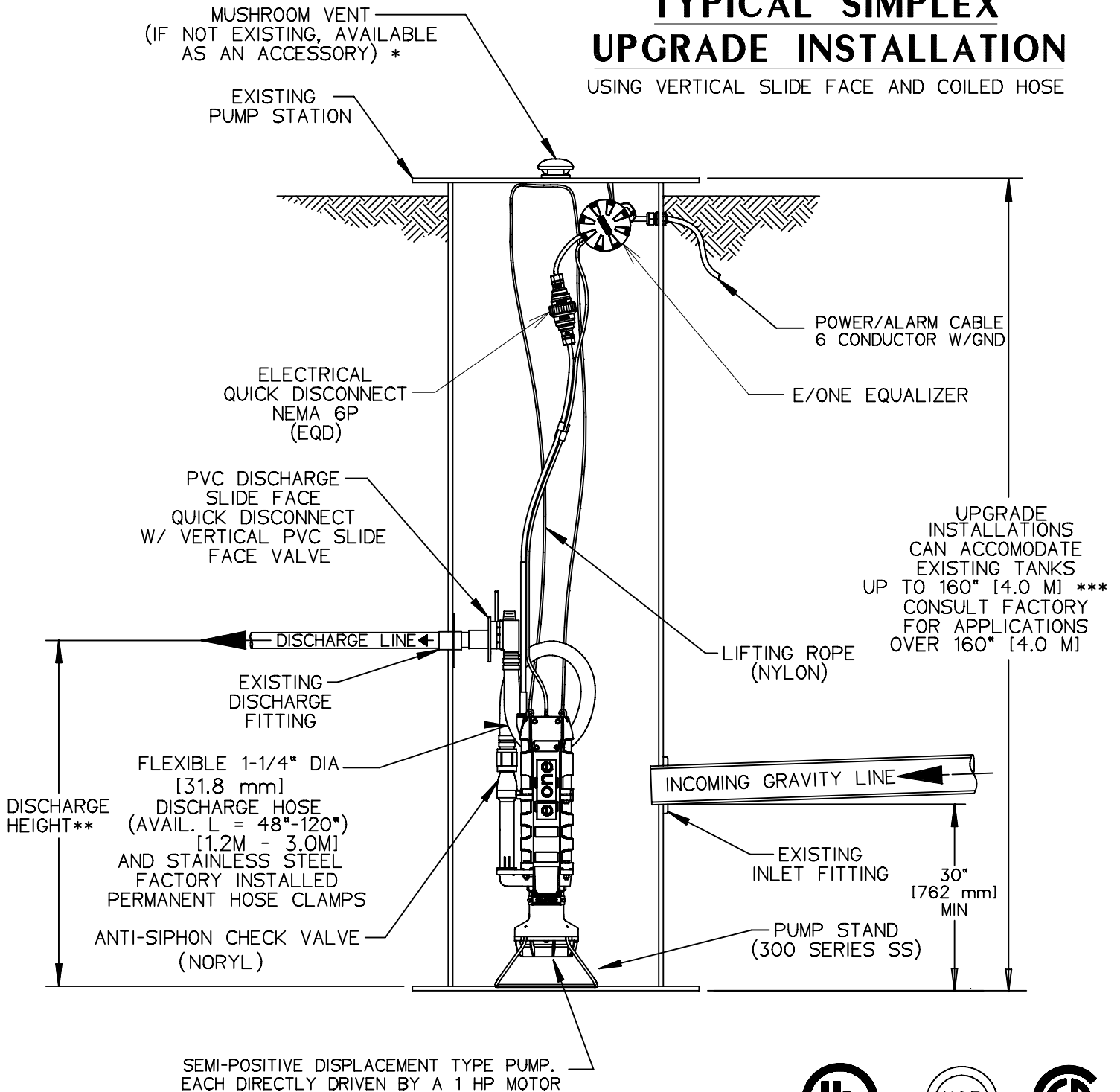
REPLACEMENT ILLUSTRATION

NA0055P03

* IN THE MAJORITY OF UPGRADE INSTALLATIONS
THE EXISTING INLET, DISCHARGE, AND
POWER SUPPLY CABLES CAN BE UTILIZED
WITHOUT MODIFICATION INCLUDING J-BOX
AND FEED-THRU'S

TYPICAL SIMPLEX UPGRADE INSTALLATION

USING VERTICAL SLIDE FACE AND COILED HOSE



CTT		12/10/10	C	
DR BY	CHK'D	DATE	ISSUE	SCALE



DETAIL SHEET, UPGRADE SIMPLEX
VERTICAL SLIDE FACE, COILED HOSE

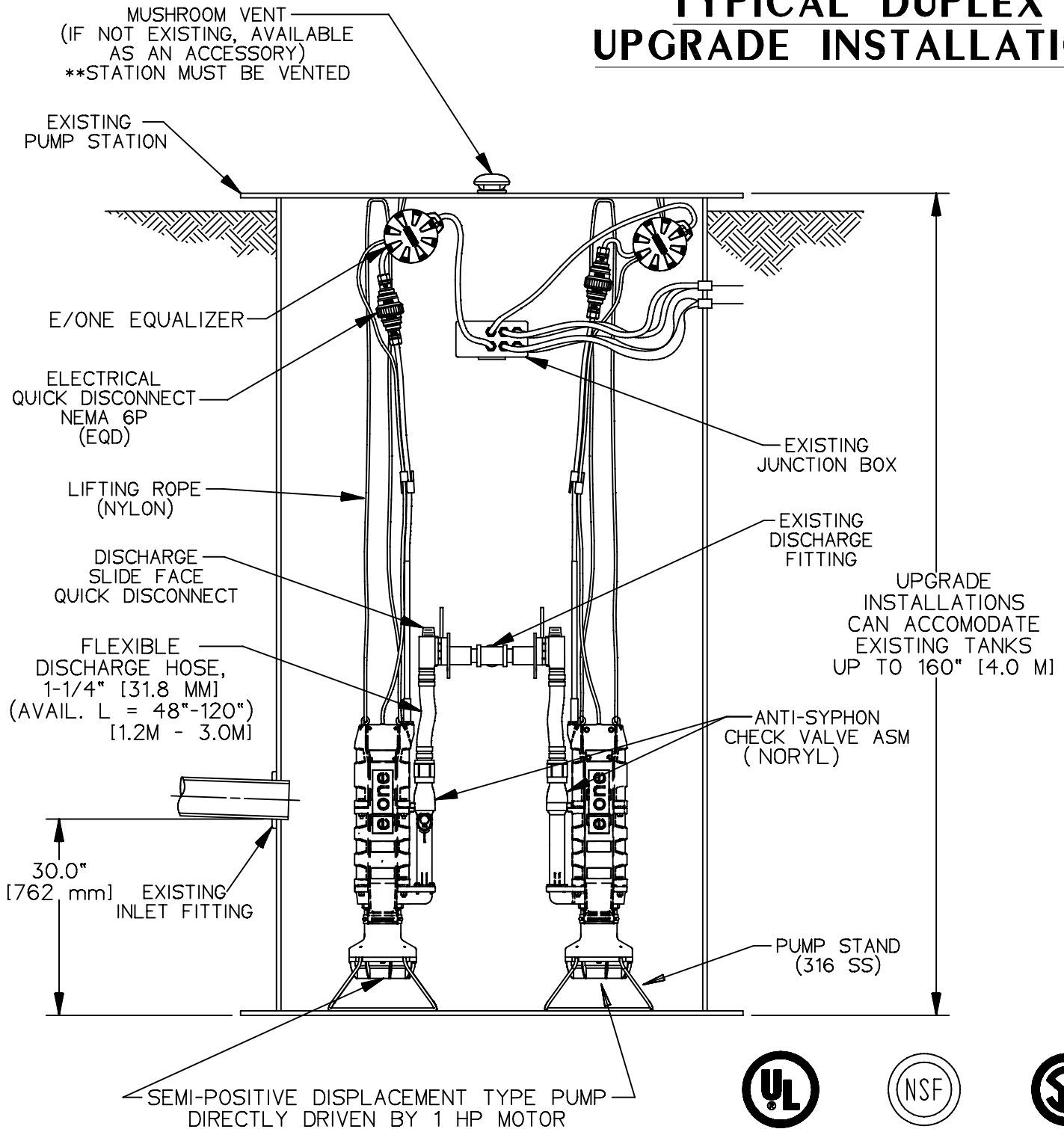
NA0055P04

* STATION MUST BE VENTED

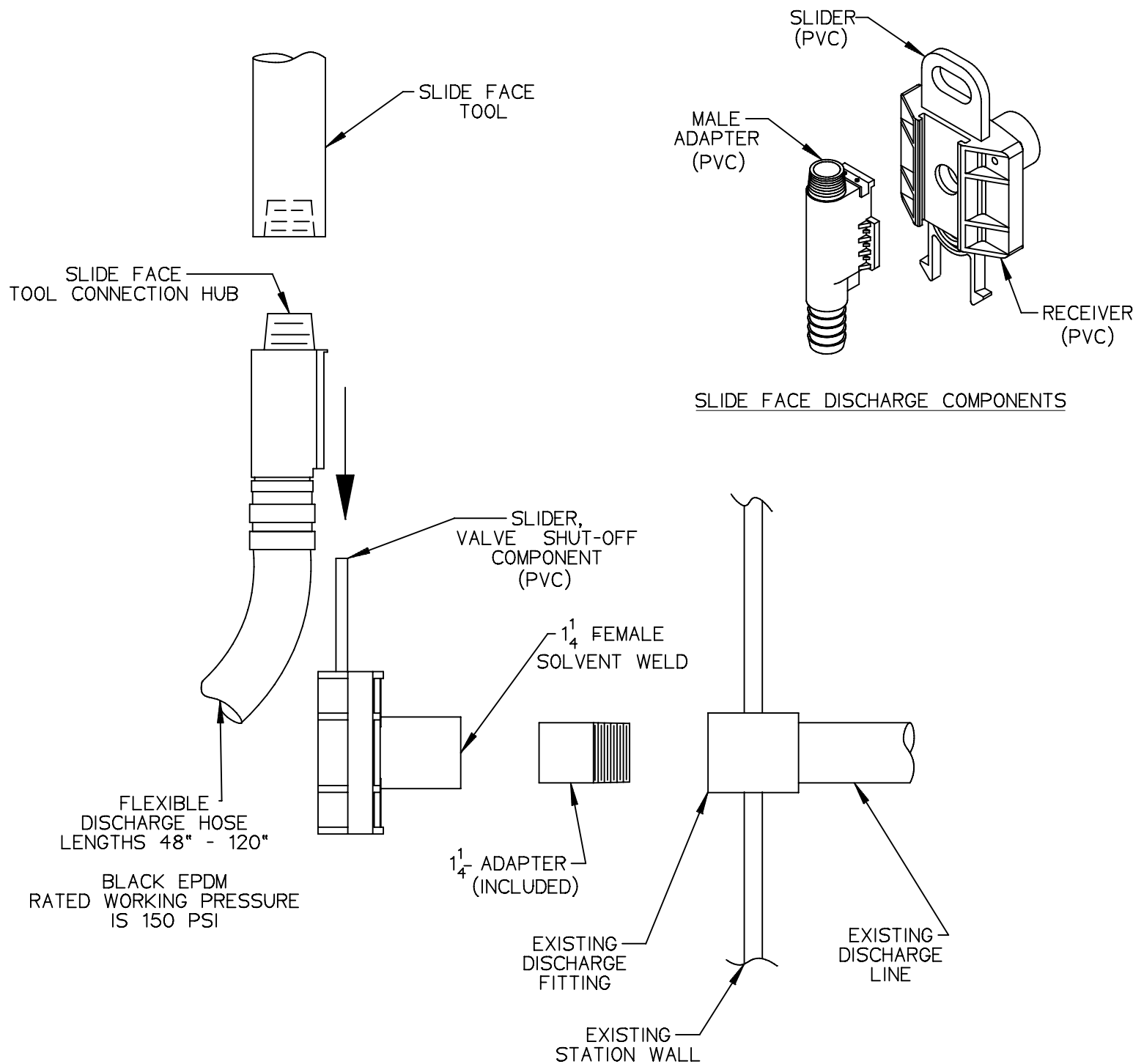
** DISCHARGE HEIGHT MUST BE KNOWN WITHIN 3 FEET [1.0 M]
TO ORDER PROPER KIT

*** DISCHARGE HEIGHT MUST NOT BE GREATER THAN 160 INCHES [4.0 M]

TYPICAL DUPLEX UPGRADE INSTALLATION



LNT		12/10/10	A	
DR BY	CHK'D	DATE	ISSUE	SCALE
DETAIL SHEET, UPGRADE DUPLEX TYPICAL DROP-IN EXISTING STATION				
NA0055P05				



DISCHARGE HOSE AND DISCONNECT/VALVE: All discharge fittings and piping shall be constructed of polypropylene, EPDM or PVC. The discharge hose assembly shall include a shut-off valve rated for 200 psi WOG and a quick disconnect feature to simplify installation and pump removal. The bulkhead penetration shall be factory installed and warranted by the manufacturer to be watertight.

SLIDE FACE ASSEMBLY



SGS		08/09/12	3	1/16
DR BY	CHK'D	DATE	ISSUE	SCALE
SLIDEFACE DISCHARGE DETAIL				
ESD 09-0136				